



STATISTICAL INFORMATION ON  
**Agriculture and Agricultural Cooperatives**  
in South and East Asia

**1970**

**International Cooperative Alliance**



- ICA AGRICULTURAL SUB-COMMITTEE  
FOR SOUTH-EAST ASIA
- ICA REGIONAL OFFICE & EDUCATION  
CENTRE FOR SOUTH-EAST ASIA

STATISTICAL INFORMATION

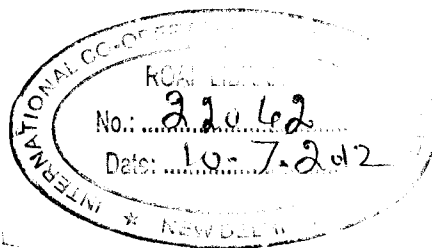
ON

AGRICULTURE AND AGRICULTURAL COOPERATIVES IN SOUTH-EAST ASIA

1970

3246  
ICA

THE ICA REGIONAL OFFICE AND EDUCATION CENTRE  
THE ICA AGRICULTURAL SUB-COMMITTEE FOR S.E. ASIA  
NEW DELHI, INDIA



336:631

ICA



INTERNATIONAL COOPERATIVE ALLIANCE  
Regional Office & Education Centre for South-East Asia  
43 Friends Colony, New Delhi, 14

India

April 8, 1970

To all Members of the Agricultural  
Sub-Committee for South East Asia

Dear Cooperator,

I am enclosing herewith the "Statistical Information of Agriculture and Agricultural Cooperatives in South-East Asia" 1970 for your comments. re

The statistical information has been compiled out of the material available with us in the ICA Regional Office and Education Centre and what has been supplied by the Members of the Sub-Committee. Only very limited statistical information has been available with regard to certain countries. However, efforts have been made to show the strength and operation of agricultural cooperative movements in the Region as far as it has been possible to do so with the limited information available.

After receiving your confirmation of the information given in the compilation, it will be printed. I shall therefore be grateful if you will kindly send me your comments, if any, by the end of May 1970, the latest. In case there is no reply by that date, it will be assumed that the information given in this document is correct.

With a view to showing the annual progress of each national cooperative movement represented by our member-organisations in the Region, it is proposed to make this an annual publication. As Member of the ICA Agricultural Sub-Committee, you are kindly requested to get your organisation to supply our Secretariat with the annual statistical publications issued by your Government and your cooperatives regarding agriculture and agricultural cooperatives in your country.

Thanking you in anticipation for your kind cooperation and with cooperative greetings,

Yours sincerely,

*Shiro Futagami*

Shiro Futagami  
Secretary, ICA Agricultural  
Sub-Committee for South-East  
Asia

cc : Member Organisations of the ICA in  
the Region.

## Table of Contents

Foreword

Part - I. General Statistical Information on Agriculture

1. Population, Land and Fertilizer Consumption
2. Important Features of Agriculture in Asian Countries as related to Crop Production
3. Production of Major Crops
4. Production of Fruits
5. Production of Industrial Raw materials
6. Livestock Population and Meat and Milk Production
7. Chicken, Meat and Egg Production
8. Price of Wheat and Rice.

Part - II. Country-wise statistical Information on Agricultural Cooperatives.

1. Australia
2. Ceylon
3. India
4. Iran
5. Japan
6. The Republic of Korea
7. Malaysia
8. Pakistan
9. The Philippines
10. Thailand

Appendix: A. Sources of Information

- B. Currency Conversion Rate
- C. Weights and Measures
- D. Units Weights of selected commodities by countries.

Part-I

GENERAL STATISTICAL INFORMATION  
ON AGRICULTURE

1. POPULATION, LAND AND FERTILIZER CONSUMPTION

	Population (1000)			Land ('000 hectares)		Commercial Fertilizer Consumption (1967-68)						
	Total (1967)	Agricultural (1965)	% of agri. population (1965)	Year	Total area	§ Arable Land	Total consumption/ha/agri. land (Kg/ha)§§					
							N	P 2.5	K 2	N	P 2.5	K 2
Australia	11,751	1,117	10	1966	768,681	39,797	1,330	8,710	850	3.3	21.7	2.1
Ceylon	11,701	5,582	50	1967	6,561	1,875	617	86	452	31	4.3	25.1
India	511,625	340,768	70	1965	326,809	162,434	11,357	4,382	2,058	7	2.7	1.2
Iran	26,284	12,030	49	1960	164,800	11,593	460	170	25	3.8	1.4	0.2
Japan	99,920	23,685	24	1967	36,966	5,753	8,807	6,211	6,340	146.6	104	111
Korea, Rep. of	29,930	15,594	55	1967	9,848	2,312	2,776	1,327	762	139	66	33
Malaysia	10,960	5,161	55	1966 (West M.)	13,131	2,549	470	60	315	15.7	2.4	12.6
Pakistan	130,185	77,030	68	1965	94,647	28,214	2,300	400	160	8.2	1.4	0.6
Philippines	34,656	18,738	58	1966	30,000	8,330	750	310	300	9.4	3.7	3.6
Thailand	32,680	24,001	78	1965	51,400	11,415	450	320	95	4	2.9	0.8

§ includes land under permanent crops

Source: F.A.O. Production

Year Book, 1968

§§ Total amount of consumption was divided by total arable land

2. Important Features of Agriculture in Asian Countries as Related to Crop Production

Source: Asian Agricultural Survey - ADB  
(p. 204, 205)

Country	Agriculture in National Economy				Land	
	Share in population 1965 %	Share in gross domestic prod. %	Share in total export value (1965) %	Share in total Import Value (1965) %	Per capita share in cultivated land by agri. population (ha.)	Average Farm size (ha.)
Australia	10					
Ceylon	55	46 (1964)	97	60	0.30	1.6
India	70	47 (1963)	38	35	0.48	1.8§
Iran §	62 (1967)					5.8
Japan §	28.9(1966)	9(1965)	1.9	23.7	0.20	1.05
Korea	55	51(1963)	35	50	0.14	0.97
Malaysia	55	31(1963)	51	32	0.68	5.92
Pakistan	74	49(1963)	63	28	0.31	2.36
Philippines	58	33(1964)	84	27	0.42	3.58
Thailand	78	33(1965)	80	12	0.47	3.50

§ Based on data published by respective country

Source: Asian Agricultural Survey published by Asian Development Bank



(2-b)

Country	Labour (Indicative)		Crops	Inputs			No. of tractors per 1,000 ha. of cultivated land
	No. of agriculturally engaged persons Per Farm	Per ha. cultiva- ted land		Fertilizer used in 1966/66 (Kg. per ha. of cultivated land			
				N	P <sub>2</sub> O <sub>5</sub>	K <sub>2</sub> O	
Australia							
Ceylon	1.92	1.20	Rice, tea, rubber, coconut.	22.7	0.5	18.3	0.3 (1964)
India		0.90	Major cereals, jute, tea, cotton, sugar cane, oil seeds	3.6	0.8	0.6	
Iran							
Japan *	2.37	2.33		129	91	100	416 (1965)
Korea	2.18	2.25	Rice, barley, soybean, wheat, sweet potato	89.1	42.2	17.8	0.1 (1963)
Malaysia	3.16	0.53	Rice, rubber, coconut, oil palm, pineapple	9.1	1.3	4.8	0.5 (1961)
Pakistan	2.55	1.09	Rice, wheat, cotton, jute.	5.1	0.4	0.1	0.1 (1965)
Philippines		0.77	Rice, maize, coconut, sugarcane, abaca, tobacco.	6.3	3.8	4.0	0.7 (1963)
Thailand	3.86	1.10	Rice, rubber, maize, kafaf, cassava	1.6	0.9	0.4	0.3 (1965)

\* same as above

Source: Asian Agricultural Survey.



(2-C)

Country	OUTPUT							Foodgrains deficit (-) or surplus (+) as % of consumption demand (%)
	Annual growth rate from 1952/53- 1954/55 to 1962/63 - 1964/65, percent compound interest							
	Total agr.prod.	Rice (%)	Wheat (%)	Maize (%)	Popula- tion (%)	Total	Food	
Australia								
Ceylon	3.1				2.6	102	117	-51.4(1965)
India	2.7	4.0	4.5	4.6	2.2	97	97	-8.7 (1965)
Iran								
Japan								
Korea	3.3	1.9	3.4	8.4	2.6	145	147	-9.3 (1965)
Malaysia	4.2	2.6			3.1	109	119	-46.9 (1965)
Pakistan	2.2	2.6	1.9	2.6	2.4	101	103	-7.2 (1965)
Philippines	3.2	2.3		5.7	3.2	97	96	-16.4 (1965)
Thailand	3.3	1.9	3.4	8.4	2.6	145	147	-9.3 (1965)

Source: Asian Agricultural Survey

3. PRODUCTION OF MAJOR CROPS

	Wheat			Rice (Paddy)			Barley			Maize			Millet & Sorghum		
	Area	Production	Yield	Area	Production	Yield	Area	Production	Yield	Area	Production	Yield	Area	Production	Yield
Australia	9,105	7,574	8.3	30	215	71.9	1,012	798	7.9	85	191	22.5	164	267	16.3 (S)
Ceylon				546	1,169	21.4				13	17	12.6	24	10	4.4 (M)
India	12,838	11,393	8.9	36,722	56,787	15.5	2,826	2,348	8.3	5,577	6,275	11.3	19,646	9,075	4.6 (M)
													16,037	10,107	5.4 (S)
Iran	4,400	4,400	9.1	385	954	24.8	1,200	1,020	8.5	17	16	8.8	17	18	10.6 (M)
Japan	367	997	27.1	3,263	18,770	57.5	352	1,032	29.3	21	61	29.0	10	10	10.0 (S)
Korea, Rep. of	152	310	20.4	1,246	4,869	39.1	971	1,916	19.7	50	60	11.8	88	43	4.9 (M)
Malaysia				320	886	27.7				3	7	22.2			
Pakistan	5,417	4,393	8.1	11,309	19,005	16.8	185	104	5.6	611	795	13.0	914	414	4.5 (M)
Philippines				3,304	4,561	13.8				2,255	1,617	6.7	585	291	5.0 (S)
Thailand				5,601	9,595	17.1				645	1,200	18.6			

M = Millet  
S = Sorghum

Source: F.A.O. Production Year Book, 1968.

3. PRODUCTION OF MAJOR CROPS (Contd...)

Area = 1000 hectares  
 Production = 1000 metric tons  
 Yield = 100 kg/hectare

	Sugarcane (1967/68)			Potatoes			Sweet Potatoes			Cassave			Onions (Dry)		
	Area	Production	Yield	Area	Production	Yield	Area	Production	Yield	Area	Production	Yield	Area	Production	Yield
Australia	224	17,025	761	40	653	163							4	86	215
Ceylon	7	100	143	1	7	64	13	73	41	69	346	50	7	36	53
India	2,037	96,384	476	473	3,522	74	201	1,549	77	279	3,715	133			
Iran	14	410	299	20	109	55									
Japan	13	854	657	183	3,636	199	214	4,031	188				33	938	284
Korea, Rep. of				53	566	98	137	1,671	122				4	60	162
Malaysia							3	90	108	20	310	155			
Pakistan	671	26,371	393	89	768	86							55	307	72
Philippines	306	15,525	508	2	12	54	130	683	52	83	514	62	5	16	32
Thailand	150	4,500	300	1	7	70	27	190	70	130	1,900	139	16	37	23

Source: FAO - Production Year Book 1968.

4. PRODUCTION OF FRUITS

Area = 1000 hectares  
 Production=1000 Metric Tons  
 Yield =100 Kg/hectare

	Orange and tangerines		Bananas		Pineapples		Groundnuts in shell			Cocoanuts
	Production	Area	Production	Area	Production	Area	Production	Yield	Production	
Australia	195	9	135		130	23	42	14.9		
Ceylon					36	5	5	10.5		2,000
India	900	210	3,700			7,554	5,329	7.7		5,300
Iran	43									
Japan	1,350									
Korea, Rep. of	2									
Malaysia		16	330		350	2	4	17.0		776
Pakistan	360	50	900		92	76	113	14.8		146
Philippines	40	58	700		203	24	13	5.3		7,100
Thailand		130	1,200		230	100	130	13.0		900

Source : F.A.O. Production year Book 1968

Area = 1000 hectares  
 Production = 1000 Metric Tons  
 Yield = 100 Kg / Hectare

5. PRODUCTION OF INDUSTRIAL RAW MATERIALS

	TEA		TOBACCO			COTTON			JUTE		
	Area	Production	Area	Production	Yield	Area	Production	Yield	Area	Production	Yield
Australia			9	136	15.1	22	17	3.1			
Ceylon	242	2,207	11	68	6.5	2	-	2.5			
India	348	3,325	424	3,534	8.3	8,047	1001	1.2	(J)835 (K)314	1,146 203	12.9 6.5
Iran	25	181	20	223	11.2	291	118	4.1	(K) 7	5	7.0
Japan	49	850	86	2,090	24.3						
Korea, Republic of			37	660	17.7	17	4	2.3			
Malaysia	3	31	3	26	10.4						
Pakistan	42	297	117	1,778	15.2	1,799	520	2.9	(J)955	1,220	12.8
Philippines			83	512	6.2						
Thailand			83	900	10.8	89	27	3.0	(J) 9 (K) 280	10 280	11.1 10.0

Source: FAO Production Year Book 1968.

6. LIVESTOCK POPULATION AND MEAT AND MILK PRODUCTION

	Livestock Population (1966) Unit: 1000						Meat Production (1967) 1000 M/T				Milk Production (1967) 1000 M/T				
	Cattle	Cows	Pigs	Sheep	Goats	Buffalo	Chicken	Beef & Veal	Mutton & Lamb	Pork	Total	Cow	Buffalo	Goat	Total
Australia	18,270	10,742	1,834	164,237	82		22,000	910	665	152	1,727	7,044			7,044
Ceylon	1,659	1,000	128	25	580	765	6,256	16	2	1	19	122	40	6	168
India	176,000	54,750	4,900	42,100	65,000	53,220	115,230	163	367	24	554	9,408	11,180	615	21,103
Iran	5,200		8	28,000	18,200	230	29,000	64	177	1	242	1,085	67,500	442	2,094
Japan	2,928	1,614	5,975	113	246		126,043	159	2	603	764	3,566		4	3,570
Korea, Republic of	1,299	596	1,457	2	161		14,008	35		72	107	19		6	25
Malaysia	286	157	601	37	308	238	23,000	13		48	61	21	6		27
Pakistan	35,700	16,532	94	11,000	11,400	8,730		274	94		368	5,546	6,325	719	12,590
Philippines	1,575		5,497	12	599	3,926	66,489	27	3	290	320	15	15		30
Thailand	5,167		4,045	16	38	6,878	37,000	50		137	187	2	4		6

Source: F.A.O. Production Year Book 1968.

7. CHICKEN MEAT AND EGG PRODUCTION

	Chicken Meat Production (1967) 100 M/T	Hen Egg Production (1967)	
		Number (Million eggs)	Weight (100 M/T)
Australia	1,000	2,854	1,618
Ceylon	31	385	173
India	690	2,152	750
Iran	210	1,260	440
Japan	2,120	21,744	11,633
Korea, Republic of	243	1,411	734
Malaysia	190	250	115
Pakistan		484	198
Philippines	400	1,366	656
Thailand	400	1,640	820

Source: F.A.O. Production Year Book 1968



3. PRICE OF WHEAT AND RICE

	Wheat		Paddy		Husked Rice		Milled rice	
	(1967)	US \$ / KF	(1967)	US \$ / K $\frac{1}{2}$	US \$ / Kg	(1967)	US \$ / Kg	
	Producer Price	Wholesale Price in 1957	Producer Price	Wholesale Price in 1957	Producer Price	Wholesale Price	Price in 1957	
Australia		6.8						
Ceylon			13.8	12.1				
India		11.9				11.6	9.6	
Japan	14.6	10.2			36.2			
Korea, Repl.						17.1	16.3 (1961)	
Pakistan		15.2				22.2	11.4	
Philippines						17.5	19.6	
Thailand					6.0	10.7	6.9	
Argentina	3.6	3.6 (1959)						
Canada	5.3	6.2						
France	10.9	8.0						
Italy	10.8	11.0	11.8	9.3				
U.S.A.	5.1	7.1	10.8	11.3				

Source: FAO Production Year Book 1968

PART II

COUNTRY-WISE STATISTICAL INFORMATION  
ON AGRICULTURAL COOPERATIVES

A U S T R A L I A

Australia \$ 1 = US \$ 1.12



1. GENERAL STATISTICS OF AUSTRALIAN COOPERATIVES AS OF JUNE 1967

(1) General

Unit: Aus. \$ 1,000

States	No. of societies	Members	Gross Turnover	Rebates & Bonuses	Interest on Share Capital
New South Wales	365	318,354	324,560	6,697	1,773
Victoria	148	122,437	149,842	829	1,063
Queensland	810	161,913	169,310	1,751	872
South Australia	71	129,230	50,387	3,317	429
Western Australia	74	64,478	70,020	3,233	616
Tasmania	15	5,252	9,533	61	52
Total	1,483	801,864	773,652	15,888	4,805

(2) Assets

States	Land, Buildings, Plant	Stock	Debtors
New South Wales	60,279	45,672	30,073
Victoria	40,780	12,717	20,339
Queensland	75,079	10,499	42,759
South Australia	16,931	10,895	5,916
Western Australia	40,194	7,048	14,975
Tasmania	1,957	937	2,478
Total	235,220	87,768	116,540

(3) Liabilities

States	Capital	Reserves accumulated profits	Creditors & Bank Borrowings	Loan Capital
New South Wales	35,403	22,635	88,301	--
Victoria	21,126	20,082	35,821	6,460
Queensland	24,865	34,163	64,864	16,993
South Australia	7,793	7,854	16,896	12,574
Western Australia	9,670	10,322	12,051	34,866
Tasmania	1,196	1,873	2,553	1,163
Total	100,053	95,895	131,071	72,056

Note: These figures were taken from the 1969 Commonwealth Year Book.

2. WESTERN AUSTRALIAN COOPERATIVE STRENGTH AS OF JUNE 1967

Cooperative Societies		89
Members		81,867
		Unit : Aus. \$ 1,000
Turnover		168,941
Rebates and Bonuses		4,165
Interest on Share Capital		624
Assets	Land, Building, Plant	50,221
	Stock	7,686
	Debtors	24,356
Liabilities	Capital	10,033
	Reserves, Accumulated Profits	14,233
	Loan Capital	43,664
	Creditors, Bank Borrowings	20,259

Note: i) Figures were compiled by the W.A.State Cooperative Federation.  
 ii) Credit Unions and Building Societies are not included.

3. AN ESTIMATE OF COOPERATIVE STRENGTH

Unit: Amount in Aus. \$ 1,000

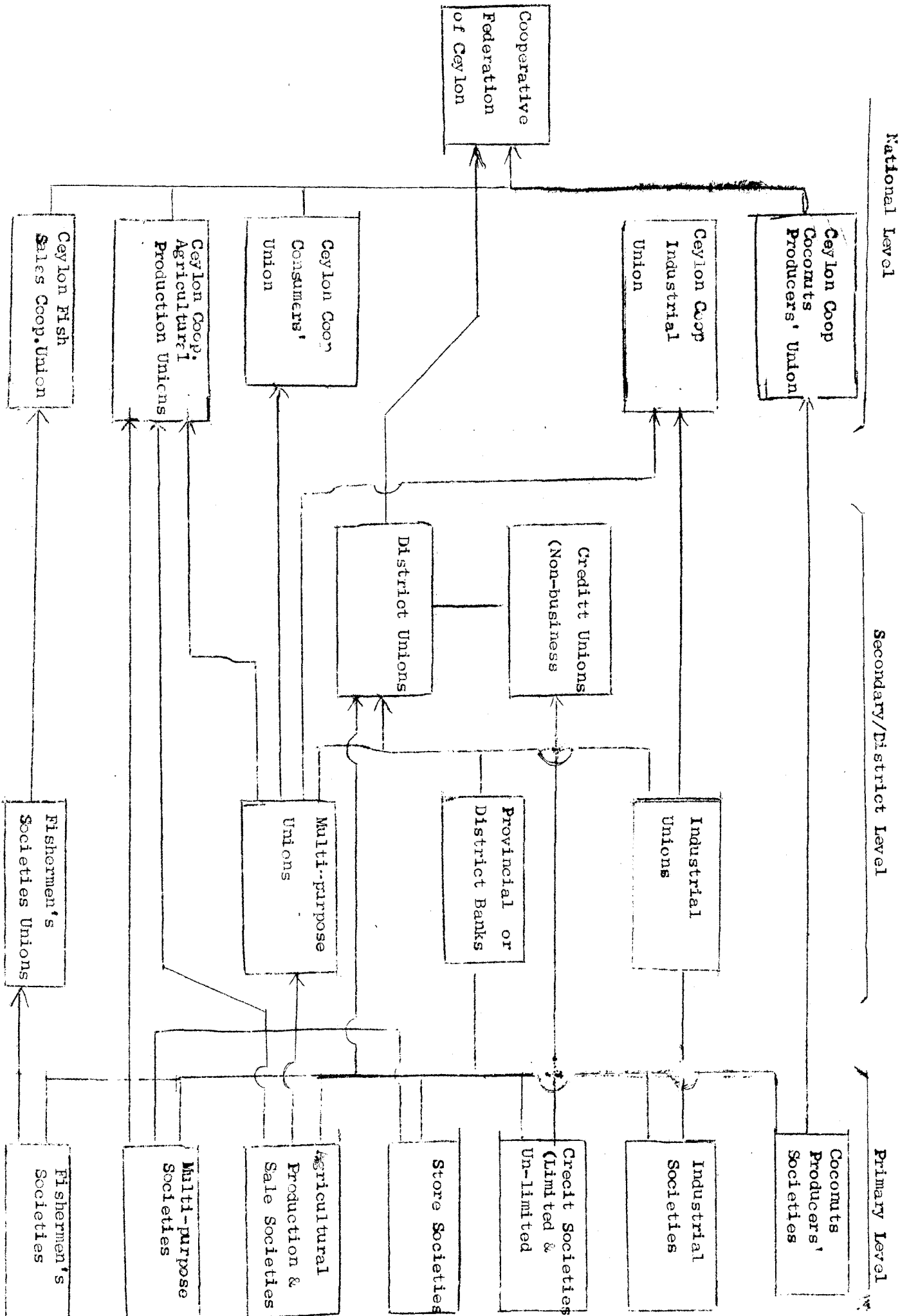
	No.	Members	Capital	Assets	Rebates	Dividends
Producers	491	282,239	50,000	232,000	11,000	2,200
Consumers	517	320,572	20,000	38,000	3,800	700
Sub-total	1,008	602,811	70,000	270,000	14,800	2,900
Housing	2,294	134,569				
Credit	516	156,800				
Sub-total	2,810	291,369				
TOTAL	3,818	894,180	70,000	270,000	14,800	2,900

C E Y L O N

U.S. \$1 = Ceylonese Rs.5.95



ORGANIZATIONAL STRUCTURE OF COOPERATIVES IN CEYLON



Note: At the national level, cooperatives are financed by the People's Bank, which is a bank for cooperatives jointly owned by the State and the cooperative

1. NUMBER OF SOCIETIES, MEMBERS AND WORKING CAPITAL FOR 1967

Type of Society		No. of Societies	No. of Members	Working Capital (Rs.1,000)
Primary	Multipurpose	5,059	935,479	136,948
	Industrial	1,162	75,085	10,864
	Credit Unlimited	3,590	133,876	17,794
	Credit Limited	263	31,773	13,800
	Savings & Thrift	362	59,300	18,046
	Stores	656	203,448	10,372
	Agricultural	674	53,678	16,038
	Labour	179	12,731	3,842
	Fisheries	271	7,480	2,636
	Schools	2,035	234,544	650
	Other Primary	189	29,339	7,058
	Total		14,440	1,776,733
Secondary busi- ness at District level.	Cooperative Banks	7	5,446	25,635
	Multipurpose Societies	124	4,645	64,184
	Unions			
	Other Unions	55	6,393	17,209
Total		186	16,484	107,028
Secondary Societies at apex level	Ceylon Coconut Producers Coop. Union	1	19	4,537
	Ceylon Agri. Producers Union.	1	251	2,426
	Ceylon Industrial Union	1	38	787
	Ceylon Fish Sales Coop. Union	1	78	1,509
	Ceylon Consumers' Union	1	24	509
Total		5	470	9,768
Secondary non-business	Cooperative Federation of Ceylon	1	26	140
	District Unions	24	7,946	1,193
	Credit Unions	70	1,360	11
	Total	95	9,332	1,344
Grand Total		14,726	-	-

2. FINANCIAL STATEMENT OF THE COOPERATIVE MOVEMENT FOR THE YEAR ENDING SEPTEMBER 30, 1967.

Unit: Ceylon Rs.1,000

	Capital	Total Liabilities.	Capital & Total Liabilities	Total Assets.	Deficit	Total Assets & Deficit	Profit(+) Or Loss (-)
Primary	Multi-purpose	114,378.3	181,684.6	169,314.7	12,369.9	181,684.6	+ 996.3
	Industrial	11,701.2	17,487.6	16,937.8	549.8	17,487.6	+ 372.2
	Credit Unlimited	8,591.2	18,344.8	18,177.2	67.6	18,344.8	+ 476.0
	Credit Limited	3,902.6	10,991.7	14,594.3	16.5	14,594.3	+ 330.5
	Thrift	12,266.2	8,081.0	20,347.2	11.6	20,347.2	+ 364.8
	Stores	10,452.8	5,670.7	16,123.5	809.2	16,123.5	+ 900.8
	Agri. Production and Sale	1,386.4	2,884.5	4,770.9	378.6	4,770.9	- 102.9
	Labour	2,106.6	3,764.2	5,870.8	620.0	5,870.8	+ 354.4
	School	1,031.8	374.3	1,406.1	35.2	1,406.1	+ 105.4
	Others						
	Primary Total	123,857.4	183,190.8	307,048.2	287,690.7	19,357.5	307,048.2
Secondary Business at Dist. Level	Coop. Banks	3,130.6	48,471.4	48,465.6	5.8	48,471.4	+ 342.3
	Multi-purpose Unions.	37,616.4	50,893.0	84,875.4	3,634.0	88,509.4	+ 3,683.6
	Other Unions	10,305.3					
	Total	51,052.3	114,913.0	165,965.3	3,781.3	165,965.3	+ 5,623.3
	Cocunut Prod. Union	658.7	3,930.9	4,639.6	2,030.0	4,639.6	- 32.1
	Agri. Prod. Union	73.6	2,575.0	2,648.6	2,322.9	2,648.6	+ 20.0
	Industrial Union	466.5	500.2	966.7	389.9	966.7	- 43.1
	Fish sales Union	1,452.9	344.3	1,797.2	1,797.2	1,797.2	- 17.6
	Consumers' Union	417.0	92.3	509.3	509.0	509.3	- 0.3
	Total	3,068.7	7,492.7	10,561.4	3,012.4	10,561.4	- 73.1
	Secondary Non-Business Societies	Coop. Fed. of Ceylon	24.4	501.6	501.6	0.0	501.6
District Unions		677.1	1,711.1	1,606.8	104.3	1,711.1	+ 5.6
Credit Unions		13.2	4.4	17.6	16.3	17.6	- 0.5
Total		644.7	1,585.6	2,230.3	105.6	2,230.3	- 1.0
Secondary Total	54,765.7	123,991.3	178,757.0	171,857.7	6,899.3	178,757.0	+ 5,549.2

3. NO. OF EMPLOYEES OF COOPERATIVE MOVEMENT (1967)

Type	No.
1. Administrative and Supervisory	
Managers	6,651
Paid Secretaries	496
Staff Assistants	18
Superintendents	17
2. Clerical and Sales Group	
Clerks and Typists	2,856
Salesmen	5,306
Storekeepers	1,078
Cashiers	307
Others	429
3. Technical and Professional	
Doctors	40
Nurses	101
Attendants	91
Accountants	88
Others	121
4. Skilled	
Mechanics and others	158
5. Semi-skilled	1,899
6. Unskilled	2,315
Total	22,471

4. NO. OF MULTIPURPOSE COOPERATIVE SOCIETIES BY SIZE OF MEMBERSHIP (1967)

Member ship	Below 50	51-100	101-200	201-300	301-400	401-500	501-600	601-700	Over 700	Total
No. of Societies	333	1,228	1,793	850	396	203	95	71	75	5,059

5. VALUE OF PRODUCE HANDLED BY COOPERATIVE AGRICULTURAL PRODUCTION AND SALES SOCIETIES AND MULTI-PURPOSE SOCIETIES (1967).

	Value in Thousand Rupees		
	Multipurpose Societies	Agri. Production & Sales Socs.	Total
Paddy	285,300	5,595	291,395
Gingelly	38	-	38
Maize	115	3	118
Red Onions	10,077	-	10,077
Potatoes	909	-	909
Rubber	723	-	723
Chillies	599	0.5	600
Turmeric	108	-	108
Vegetables	83	-	83
Others	1,463	-	1,463
<b>Total</b>	<b>299,915</b>	<b>5,599</b>	<b>305,514</b>

6. FINANCIAL STATUS OF CREDIT SOCIETIES (unlimited) -1967

	3,613 132,630	
	Number of Societies	Number of Members
	Amount in Rs.1,000	Percentage on Total capital
Share Capital	3,849	21.1
Reserve Fund	5,774	31.7
Deposit (Individual) held	4,915	26.9
Loans:		
(i) People's Bank	1,139	6.2
(ii) District Banks	1,807	9.9
(iii) Government	17	0.9
(iv) Others	187	1.0
(Total)	(3,150)	(18.0)
Total Capital	18,177	100.00
Loans outstanding from members	13,771	75.7
Cost of Management	142	0.7
Net Profit	521	2.8
% of Share Capital and members' Deposits to total loans outstanding	-	61.4

7. FINANCIAL STATUS OF CREDIT SOCIETIES ( LIMITED ) -1967

Number of Societies		263
Number of Members		30,773
	Amount in Rs.1,000	% on Total Capital
Share Capital(Paid up)	2,131	11.9
Reserves	853	4.8
Deposit (Individual) held	9,736	37.3
Loans from		
(i) Banks	6,269.8	35.0
(ii) Government	0.0	-
(iii) Other Sources	0.0	-
(Total)	(6,269.8)	(35.0)
Total Capital	17,973	100.00
Loans outstanding from members	11,207	62.6
Cost of management	184	1.0
Net Profit	338	1.9
% of Share Capital and Members' Deposits to total loans outstanding	-	77.4

8. LOANS ISSUED BY CREDIT SOCIETIES (Unlimited) IN 1967

Purpose	Amount in Rs.1,000	Percentage on Total amount	
Productive	Cultivation	5,076	43.1
	Buying of Cattle	163	1.8
	Purchase of Land	538	4.5
	Improvement and Lea of Land	889	7.6
	Trade	1,389	13.1
	Building of Houses	1,051	9.1
	Buying of Carts	60	0.7
	Buying of Foodstuffs	31	0.3
	Medical Aid	35	0.5
	Others	1,346	11.2
	Total	10,623	91.9
Unproductive	Payment of Old Debts	673	5.2
	Ceremonial Debts	34	0.3
	Others	361	2.6
	Total	1,068	8.1
Grand Total	11,696	100.00	



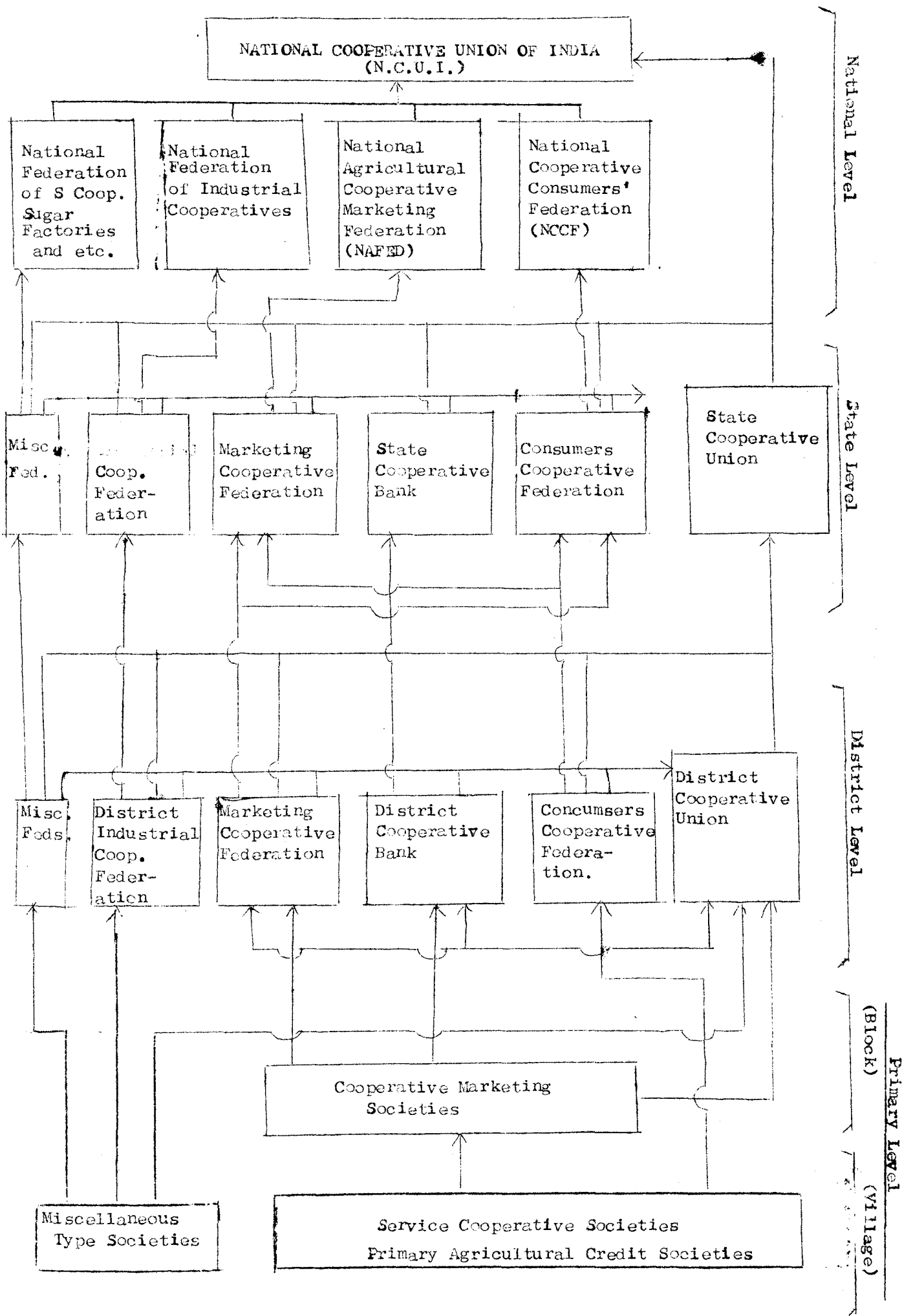
9. LOANS ISSUED BY CREDIT SOCIETIES (LIMITED) IN 1967

Purpose		Amount in Rs.1,000	% on Total Amount
Productive	Cultivation	641.8	7.9
	Buying cattle	17.8	0.2
	Purchase of Land	534.4	6.6
	Improvement and Lease of Land	351.0	4.3
	Trade	656.2	8.4
	Building of Houses	1,524.3	18.9
	Buying of Carts	69.5	0.8
	Buying of Foodstuffs	41.0	0.6
	Medical Aid	270.4	3.5
	Others	1,108.3	13.8
	Total	5,214.7	65.0
Unproductive	Payment of Old Debts	1,667.0	20.8
	Coremonials	224.6	2.8
	Others	918.5	11.4
	Total	2,810.1	35.0
Grand Total		8,024.8	100.0

I N D I A

US. \$ 1 = Rs. 7.50

ORGANIZATIONAL STRUCTURE OF COOPERATIVES IN INDIA



1. PRIMARY AGRICULTURAL CREDIT SOCIETIES

	1966 - 67	1967 - 68 (Provisional)
No. of societies ( 000 )	179	175
Percentage villages covered	90	N.A.
Membership ( 000 )	26,709	28,319
Percentage population covered :		
(a) Rural	34	35
(b) Agricultural	41	42
Average membership per society	149	162
Paid up share capital (Rs.1,000,000)	1,286.1	1,437.3
Of which from Government (Rs.1,000,000)	111.2	121.1
Deposit (Rs. 1,000,000)	390.9	485.7
Working capital (Rs.1,000,000)	6,252.0	6,855.3
Loans advanced (Rs.1,000,000) (a) Total	3,664.7	4,045.8
(b) Of which medium-term	397.1	460.1
Loans overdue: (a) Total (Rs.1,000,000)	1,601.5	1,567.5
(b) As % of outstanding	34	30
Average per society (Rs) (a) Share capital	7,178	8,236
(b) Deposits	2,184	2,783
(c) Loans advanced	20,379	23,184
Average per member (Rs) (a) Share Capital	48	51
(b) Deposits	14.63	17.15
(c) Loans advanced	137	143

2. STATE AND CENTRAL COOPERATIVE BANKS AND LAND MORTGAGE BANKS

		1966 - 67	1967 - 68 (Provisional)
Central Cooperative Banks	No. of banks	346	344
	Paid-up share capital (a) Total	859.9	992.4
	(b) Of which from Government	216.3	267.9
	Deposits (Rs. 1,000,000)	2,593.2	2,885.8
	Loans & advances made during the year (Rs. 1,000,000)	9,435.3	8,860.0
	Percentage loans overdue	24.9	24.4
	Average per bank (Rs.1,000) (a) Share Capital (b) Deposits (c) Advances during the year	2,485 7,210 27,270	2,885 8,389 25,751
State Cooperative Banks	No. of banks	25	25
	Paid-up share capital (Rs.1,000,000) (a) Total	311.6	349.7
	(b) Of which from Government	103.5	N.A.
	Deposits (Rs. 1,000,000)	1,473.8	1,806.7
	Loans and advances made during the year (Rs. 1,000,000)	5,131.6	6,355.6
Land Mortgage Banks	No. of banks (a) General (b) Primary	19 707	19 -
	Loans advanced during the year to individuals (Rs. 1,000,000)	575.5	833.5
	Loans outstanding with individuals (Rs. 1,000,000)	2,093.0	2,699.8

3. STRENGTH OF ALL AGRICULTURAL MARKETING SOCIETIES AS OF JUNE 1967

Unit : Amount in Indian Rs. 1,000,000

	No. of Societies	Membership		Share capital		Reserve and other funds	Working capital
		Societies	Individuals	Total	of which govt. contributions		
Primary	3,295	145	1,946	218.6	144.3	183.4	764.9
Central	156	27	59	20.6	8.8	61.8	233.1
State	24	6	1.1	52.8	44.3	57.3	533.1
National (Nafed)	1	23	-	1.5	-	1.6	3.9

4. OPERATIONS OF ALL MARKETING SOCIETIES DURING 1966 - 67

Unit : Amount in Indian Rs. one million

		National	State	Central	Primary
Societies not doing any Marketing		-	7	52	996
Societies doing marketing		1	17	104	2,300
<u>Value of Purchase:</u>					
Agricultural Produce		22.5	742.2	120.2	524.6
Agricultural Requisites		-	438.4	386.8	589.7
Consumer goods		-	137.6	352.5	1,236.8
<u>Value of Sales :</u>					
As Owners	Agricultural Produce	23.5	909.4	122.0	412.9
	Agricultural Requisites	-	265.8	285.4	481.8
	Consumer goods : § Foodgrains	-	110.3	196.4	650.8
	§ Others	-	29.5	173.8	646.0
As agents	Agricultural produce	-	141.6	169.1	1,063.3
	Agricultural requisites	-	256.6	253.2	296.3
	Consumer goods § Foodgrains	-	8.5	0.5	70.8
§ Others	-	68.2	9.9	55.4	

5. NUMBER AND MEMBERSHIP OF ALL NON-CREDIT SOCIETIES  
AS OF JUNE 1967

Type of societies	Number of societies	Membership (1,000)
1. Marketing societies	3,476	2,187
2. Sugarcane supply societies	6,561	2,668
3. Milk supply societies	9,046	689
4. Other livestock products societies	1,829	70
5. Farming societies	7,866	208
6. Irrigation societies	1,631	77
7. Other agricultural societies	10,815	720
8. Sugar factories	82	329
9. Cotton ginning and pressing societies	163	118
10. Other processing societies	1,529	205
11. Weavers' societies	12,946	1,350
12. Spinning mills	66	97
13. Industrial societies	33,994	1,597
14. Consumers' stores	14,208	4,453
15. Housing societies	12,739	823
16. Industrial estates	125	8
17. Fisheries societies	3,483	362
18. Other non-agricultural societies	11,434	1,170
19. Insurance societies	7	13
20. Supervising unions	788	46
21. State and District unions/institutions	218	100
Total	133,006	-



6. SALE OF AGRICULTURAL PRODUCE, SUPPLY OF PRODUCTION  
REQUISITIES AND DISTRIBUTION OF CONSUMER GOODS  
DURING 1966-67

Unit: Amount in Indian Rs.1,000

	Commodities	State level	Central level	Primary level
Sale of Agricul- tural Produce	Paddy	60,103	31,945	206,404
	Wheat	123,470	12,924	246,374
	Other Food- grains	667,431	32,383	312,735
	Sugar-cane	-	48,065	769,919
	Cotton	19,492	35,139	230,565
	Tobacco	-	140	749
	Coconut	-	2,871	6,654
	Oil-seeds	3,877	8,420	65,804
	Jaggery	36	19,016	38,705
	Arecanut	-	-	48,627
	Fruits & Vegetable	7	5,919	54,793
	Others	177,301	142,531	255,568
	Total	1,051,717	339,353	2,237,025
Supply of Production Requisites	Fertilizers	469,497	474,663	605,903
	Seeds	29,864	11,742	101,240
	Agri.Implements	23,934	11,499	21,907
	Pesticides & Insecticides	4,935	1,063	6,620
	Others	30,224	42,372	143,650
	Total	558,454	541,339	881,238
Dist. of cons.goods	Foodgrains	118,865	1,265,825	2,034,945
	Others	97,663	1,016,286	1,341,778

7. LOAN AND OTHER OPERATIONS OF ALL MARKETING SOCIETIES DURING 1966-67

Unit: Amount in Indian Rs.1,000,000

			National (NAFED)	State	Central	Primary
Loans advanced by marketing societies	To societies	No. of socs. advancing	-	6	40	342
		Amount advanced	-	40.3	34.8	63.4
	To individuals	No. of socs. advancing	-	2	16	1,100
		Amount advanced	-	2.0	8.6	250.0
Recoveries		From societies	-	37.9	33.5	61.1
		From individuals	-	2.0	18.1	238.6
Loans of credit socs. recovered by marketing produce	No. of mktg. socs. doing		-	1	5	534
	Amount of loan recovered		-	0.04	6.4	104.2
	No. of credit societies concerned		-	9	489	168.1
Cost of management			1.7	31.9	20.8	72.0
Profit	No. of societies		1	17	132	2,104
	Amount		0.7	16.0	10.7	38.3
Loss	No. of societies		-	5	20	824
	Amount		-	3.6	0.6	8.0
No. of societies without profit or loss			-	-	4	367
Govt. aid	Loans		-	10.8	10.0	23.1
	Subsidies		-	1.1	0.5	9.4

8. LINKING OF COOPERATIVE CREDIT WITH COOPERATIVE MARKETING

Unit: Amount in India Rs.1,000,000

	Total No. of Primary Agri. Credit Socs. (1,000)	No. of socs. affiliated to Marketing Socs. (1,000)	% of affili- ation	Short/Medium Loan advanced by credit socs.	Loans recovered through marketing socs.
1961-62	215	90	41	2,283.0	100.8
1964-65	210	125	60	3,194.3	302.8
1966-67	181	140	77	3,654.0	350.0

9. EXPORT OF AGRICULTURAL PRODUCE BY COOPERATIVES  
(COMMODITY-WISE)

Unit: Amount in Indian Rs.1,000

	1964-65	1965-66	1966-67
Pulses	1,227	2,931	13,941.6
Bananas	4,370	5,374	2,915.5
Cotton	-	-	-
Peas Farm	-	30	-
Virginia Tobacco	2,100	-	-
Oranges	-	-	17.0
Onions	964	929	882.0
Mangoes	13	31	142.0
Chillies, Lemon, Grapes	15	1	0.6
Copra Cake	205	192	600.0
Cardamon	-	15	-
Coconut	-	88	939.0
Fresh Fruits	-	-	4.5
Vegetables	-	-	4.8
Total	8,894	9,591	19,447.0

10. SUPPLY OF AGRICULTURAL PRODUCTION REQUISITES AND CONSUMER GOODS BY COOPERATIVES IN RURAL AREAS

Unit: Indian Rs.1,000,000

Commodity	1966-67
Chemical fertilizers	1,143.7
Seeds	227.8
Agricultural Implements	43.7
Other Production Requisites	176.7
Total	1,591.9
Consumer goods	2,453.3

11. NO. OF GODOWNS OWNED BY COOPERATIVES

	1966-67
Godowns of marketing societies	4,006
Rural godowns	14,195
Total	18,201
Capacity in thousand tonnes	2,421

12. COOPERATIVE COLD STORAGE

	No.of Units	Capacity in 1,000 tonnes
1960-61	13	12
1964-65	40	39
1966-67	81	104

13. COOPERATIVE AGRICULTURAL UNITS

Type	No.of units in 1967-68	Quantity processed
Rice milling	770	
Rice Bran Oil Units	3	
Dal Mills	32	
Sugar Factories	76	663,000 Tonnes
Sugar Crystal Units	28	
Cotton Ginning and Pressing	237	1,420,000 Bales
Spinning Mills	26	
Ground nut processing	53	
Oil Mills	182	500,000 Quintals
Solvent Extraction Plant	4	7,501 Tonnes
Jute bawling units	49	
Jute mill	1	
Fruits and Vegetable Processing	35	1,807 M/T
Total	1,496	

I R A N

US \$ 1 = Rials 75.75

1. WORKING OF RURAL COOPERATIVES IN IRAN AS OF MARCH 1969

Unit: Amount in ~~Iranian~~ Rials 1,000

Rural Cooperative Societies	
1. No. of Rural Cooperatives	8,644
2. No. of Members	1,278,389
3. Amount of Capital	1,647,827
4. Amount of Reserves	279,242
5. No. of Loans issued to farmers (1968-69)	738,500
6. Amount of Loans issued to farmers (1968-69)	5,041,337
7. Collection of loans from farmers	4,009,525
8. Balance of loans	5,228,766
9. No. of villages covered by cooperatives	23,697
Rural Union Cooperatives	
1. No. of Unions	99
2. Amount of capital	526,037
3. No. of member cooperatives	7,455
4. Value of marketing of agricultural produce	1,285,000

2. MARKETING OF AGRICULTURAL PRODUCE (1967)

Commodities	Volume marketed through Cooperatives
Potato	11,655 (Kg)
Onion	33,717
Dates	53,233
Rice	12,260,753
Wheat	152,489,000
Dried Fruits	20,600
Tea	150
Pistachio	153
Seed Cotton	48,456

3. SUPPLY OF AGRICULTURAL INPUTS BY COOPERATIVES (1968)

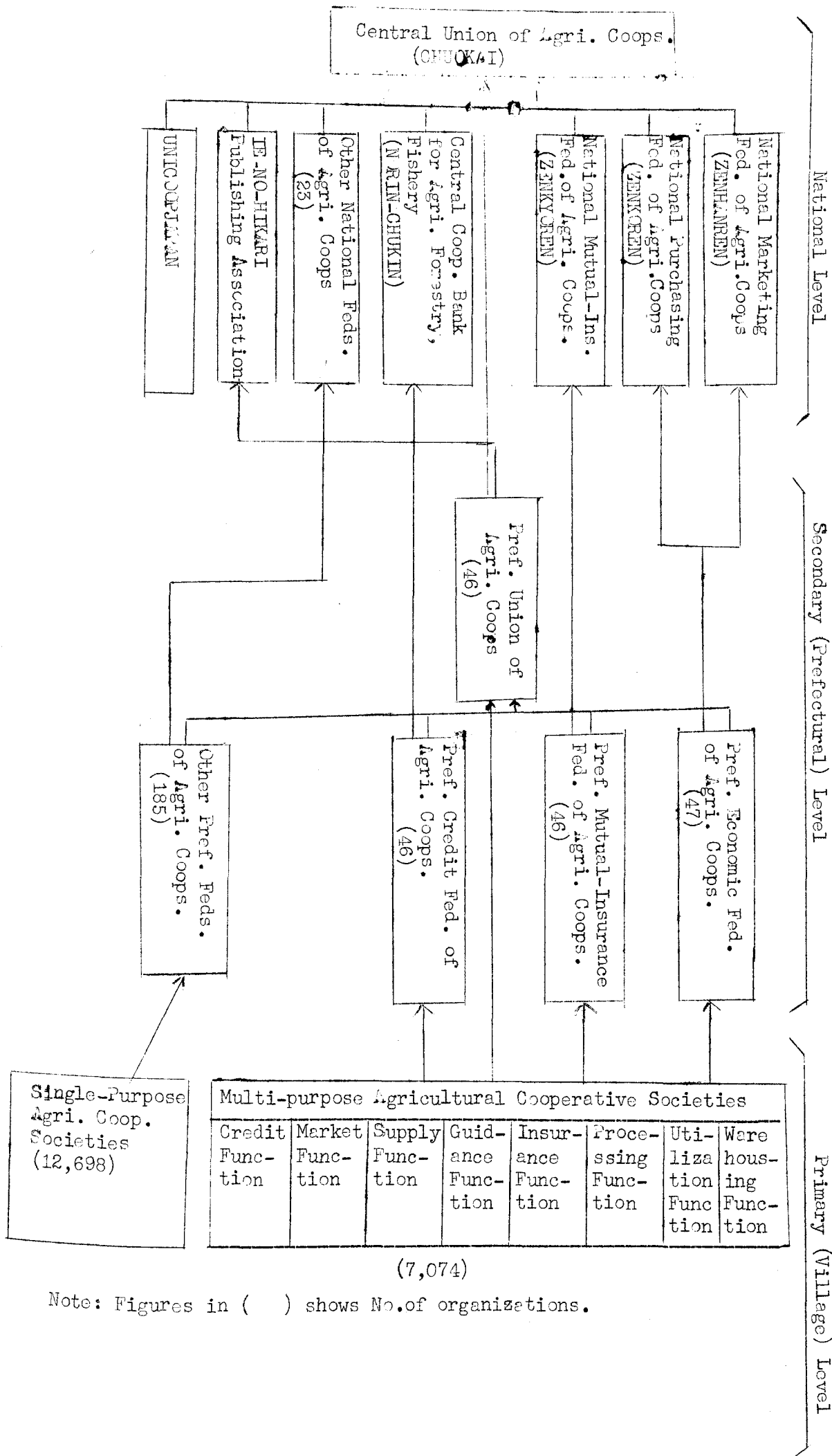
Commodities	Volume of supply by Coops (Kg. in case of weight)
Fertilizer	57,159,575
Insecticides	1,333,828
Sprayer	2,066
Deep Well	123
Shallow Well	996
Silkworm Seed	2,892 (Boxes)
Cleaned wheat Seed	10,825,380
Alfalfa Seed	37,548
Local Wheat Seed	20,825,380
Rice Seed	175,000



J A P A N

US \$ 1 = ¥ 360

ORGANIZATIONAL STRUCTURE OF AGRICULTURAL COOPERATIVES IN JAPAN



Note: Figures in ( ) shows No. of organizations.

1. AVERAGE ECONOMIC STATUS PER ONE FARM HOUSEHOLD (1966)

Size of family (Person)	No. of persons engaged in farming in a family	Land holdings (ha.)
5.22	1.83	1.048
(Unit: ₹ 1,000)		
A Agricultural Gross Income	725.7	(US\$ 2,016)
B Non-Agricultural Income	504.3	( " 1,400)
C Farm Management Expenses	312.4	( " 868)
D Non Farm Expenses	56.2	( " 156)
E Agricultural Net Income (A-C)	413.3	( " 1,148)
F Non-Agricultural Net Income (B-D)	448.1	( " 1,244)
G Total (E + F)	861.4	( " 2,392)
H Tax	71.9	( " 200)
I Miscellaneous Income	86.7	( " 241)
J Living Expenses	726.4	( " 2,018)
K Net Savings (G+I)-(H+J)	149.8	( " 415)

2. NUMBER AND MEMBERSHIP OF PRIMARY MULTI-PURPOSE AGRICULTURAL COOPERATIVE SOCIETIES AND AVERAGE MEMBERSHIP PER SOCIETY IN 1967/68

	Total No. of Multi-purpose Societies	No. of societies reported	Regular Membership		Associate Membership		Sub-total		Total
			Indivi- dual	Groups	Indivi- dual	Groups	Indivi- dual	Groups	
			(1000)	(1000)	(1000)	(1000)	(1000)	(1000)	(1000)
National Total	7,074	6,961	5,931 * (5,378)	4	1,090	36	7,021	40	7,061
Average per society			852 * (773)	1	157	5	1,009	6	1,015

\* = Households

3. NUMBER OF BOARD MEMBERS (ELECTED) AND EMPLOYEES OF PRIMARY MULTI-PURPOSE AGRI. COOP. SOCIETIES IN 1967/68.

	Board Members (Elected)				Employees				
	Full-time Directors	Part-time Directors	Auditors	Total	Manager	Accountants	Farm Advisors	Other Employees	Total
National Total	9,282	75,313	25,904	110,499	4,471	1,647	14,523	203,570	224,211
Average per society	1.4	10.8	3.7	15.9	0.7	0.2	2.1	29.2	32.3

4. DISTRIBUTION OF PRIMARY MULTI-PURPOSE SOCIETIES BY SIZE OF MEMBERSHIP (HOUSEHOLD) - 1967-68

Membership (Household)	Less than 100	100 to 299	300 to 499	500 to 999	1,000 to 1,999	2,000 to 2,999	More than 3,000
%	1.7	19.0	27.0	31.9	13.6	3.8	3.0

5. DISTRIBUTION OF PRIMARY MULTI-PURPOSE SOCIETIES BY NUMBER OF EMPLOYEES - 1967-68

Number of Employees	None	1-9	10-19	20-49	More than 50
%	0.1	19.0	31.4	32.4	17.1

6. DISTRIBUTION OF PRIMARY MULTI-PURPOSE SOCIETIES BY NUMBER OF FARM ADVISORS EMPLOYED - 1967-68.

No. of Farm Advisors employed by a society	None	1	2	3	4	5-6	7-10	11-20	More than 21
%	29.1	33.2	14.3	7.8	4.2	4.8	3.5	2.5	0.6

7. SPECIALIZATION OF FARM ADVISORS - 1967-68

Specialized Field	Crop cultivation	Seri-culture	Livestock	Vegetables	Fruits	Farm Management	Farm machinery	Others
%	23.8	3.7	24.5	11.7	11.1	17.0	2.9	5.3

8. FINANCIAL STATUS OF PRIMARY MULTI-PURPOSE AGRICULTURAL COOPERATIVE SOCIETIES (AS OF MARCH 31, 1968)

8-a Share Capital

	Total	Per Coop.	Per Member
Paid-up	¥ 130,212 million	¥ 18.7 million	¥ 24,230
Share Capital	\$ 361,700,644	\$ 51,961	\$ 67

8-b Number of Coops. with profit or loss for 1967-68

	Number of Coops.
Coops with Profit	6,748
Coops with Loss	195
Coops with no Profit or no Loss	18

8-c Balance Sheet of Primary Multi-Purpose Societies (1967/68)

No. of societies surveyed : 6961 out of 7209

Unit: ¥ 1000

Assets			Liabilities and Net Worth		
	Total	Average per society		Total	Average per society
I Business Assets			I Business Liabilities		
1. Credit			1. Credit		
(i) Cash	20,207,660	2,903.0	(i) Savings	3,481,884,172	500,198.8
(ii) Deposits	1,901,289,390	273,134.5	(ii) Borrowings	535,106,194	76,872.1
(iii) Securities	132,196,985	18,991.1	(iii) Sub-total	4,016,990,366	577,070.9
(iv) Loans	1,694,350,255	243,406.2	2. Insurance	33,181,533	4,766.8
(v) Others	90,592,105	13,014.2	3. Farm Land Trust	1,081,181	155.3
(vi) Sub-Total	3,838,636,395	551,449.0	4. Supply and Marketing	141,594,517	20,341.1
2. Insurance	11,502,792	1,652.5	5. Total Business Liabilities	4,192,847,597	602,334.1
3. Farm Land Trust	1,099,037	157.9	II Reserve for Provident Fund, Tax, Price Fluctuation etc.	44,615,810	6,409.4
4. Supply and Marketing	289,355,213	41,568.0	III Total Liabilities	4,237,463,407	608,743.5
5. Reserve for Bad Debts (Subtraction)	(-)25,312,818	(-)3,636.4	IV Net Worth		
6. Total Business Assets	4,115,280,619	591,191.0	1. Share Capital	130,212,232	18,706.6
II Fixed Assets	278,552,911	40,016.2	2. Revolving Funds	785,707	112.9
III Special Fund for Amalgamation	3,469,104	498.4	3. Revaluation Reserve	578,417	83.1
IV Deferred Account	4,347,181	624.5	4. Legal Reserve	10,989,138	1,578.7
V Total Assets	4,401,649,815	632,330.1	5. Capital Reserve	947,732	136.1
VI Unappropriated Deficit	5,520,633	793.1	6. Special Reserve	76,664,934	1,101.1
			7. Total Net Worth	151,178,160	21,717.9
			V Unappropriated Earned Surplus	18,528,881	2,661.8
VII TOTAL	4,407,170,448	633,123.2	VI TOTAL LIABILITIES AND NETWORTH	4,407,170,448	633,123.2

9. VOLUME OF BUSINESS OF MULTI-PURPOSE AGRICULTURAL COOPERATIVES

9-a Credit during 1967-68 (as of March 31, 1968)

Unit: Million = 1,000,000

		Multi-purpose Agri Coops.		Prefectural Credit Fed. of Agri. Coops.		Central Coop. Bank for Agri. and Forestry
		Total	Per Coop	Total	Per Federation	
Savings received	¥	3,481,884	500	1,912,423	45,326	1,088,498
	US\$	9,672	1.4	5,312	126	3,024
Loans advanced	¥	1,694,350	243	660,262	15,717	1,017,872
	US\$	4,707	0.68	1,834	44	2,827

9-b Marketing during April 1, 1967 - March 31, 1968

Item	Total amount		Average per Coop. (¥ '000)	% of marketing through federations
	(¥ '000)	(US\$ '000)		
Rice	1,190,379,000	3,306,609	171,007	100.0
Wheat, Barley and other	56,689,000	157,468	8,144	98.4
Misc. cereals	15,488,000	43,021	2,225	72.4
White & Sweet potatoes	31,794,000	88,317	4,568	82.7
Silk Cocoon	66,001,000	183,337	9,482	88.0
Vegetables	87,816,000	243,934	12,616	76.2
Fruits	117,721,000	327,003	16,912	79.2
Tea	7,774,000	21,596	1,117	27.0
Industrial crops	19,622,000	54,617	2,825	40.9
Other Agri.products	46,569,000	129,359	6,690	54.9
Milk	61,071,000	169,642	8,774	78.8
Eggs	53,672,000	149,089	7,710	71.0
Chicks and breeding chicken	872,000	2,423	125	58.8
Broiler & old chicken	9,623,000	26,730	1,382	62.2
Dairy cattle	2,776,000	7,710	399	65.5
Beef cattle	38,484,000	106,900	5,529	74.6
Hogs	55,710,000	154,751	8,003	70.6
Breeding cows,pigs, calves etc.	26,425,000	73,402	3,796	79.1
Other livestock products	14,809,000	41,137	2,128	70.7
Total	1,903,337,000	5,287,047	273,428	91.1

9-c Supply during April 1, 1967 - March 31, 1968

Item	Total amount		Average per Coop (¥1,000)	% of purchase from federa- tions
	¥ 1,000	US\$ 1,000		
<u>Production Materials</u>	635,113,000	1,764,202	91,239	78.3
(i) Fertilizers	151,613,000	421,147	21,780	87.8
(ii) Feedstuffs	200,613,000	557,258	28,820	84.2
(iii) Agri. Machinery	92,009,000	255,580	13,218	75.8
(iv) Packing Mater- ials	17,082,000	47,449	2,454	66.5
(v) Hot beds materials	9,668,000	26,854	1,389	60.6
(vi) Agri. Chemicals	55,589,000	154,414	7,986	71.8
(vii) Oils (Petrol)	32,581,000	90,502	4,681	67.1
(viii) Automobiles	8,768,000	24,356	1,260	75.1
(ix) Other	67,191,000	186,642	9,653	59.3
<u>Consumer Goods</u>	219,356,000	609,322	31,512	57.7
(i) Foodstuffs	112,501,000	312,502	16,162	66.0
(ii) Clothing	15,314,000	42,539	2,200	53.8
(iii) Durable cons. goods	14,371,000	39,919	2,065	67.4
(iv) Misc. goods	23,554,000	65,429	3,384	49.6
(v) L.P. gas	12,239,000	33,996	1,758	74.4
(vi) Others	41,377,000	114,937	5,944	51.9
Total	854,469,000	2,373,524	122,751	73.1



9-d Processing (April 1, 1967 - March, 1968)

Type of Processing	Total Amount (¥ 1,000)	Average per Coop. (¥ 1,000)
Rice Milling	460,918	354
Flour Milling	200,713	154
Starch & Potato Processing	7,900,383	6,068
Pickles Manufacturing	246,496	189
Soya Bean Sauce & Paste	594,575	457
Fruit Processing	4,186,283	3,215
Meat Processing	770,194	592
Milk Processing	1,828,064	1,404
Tea Processing	3,190,441	2,450
Straw Processing	150,940	116
Others	1,781,239	1,368
Total	21,310,246	16,367

9-e Agricultural Cooperative Mutual Relief Insurance  
(As of March 31, 1968)

Unit: ¥ 1,000,000

Type of Insurance		No. of policies held		Value of Insurance	
		Total	Per Coop	Total	Per Coop
Long-Term	Life Endowment Ins.	7,066,010	1,026	2,785,249	404
	Children's Insurance	928,599	135	270,757	39
	Building Rehabilitation Insurance	5,635,198	818	2,986,914	434
Short-Term	Fire Insurance	178,265	27	134,257	20
	Automobile Insurance	117,381	18	422,842	63
	Compulsory Insurance for car accident Indemnification	2,625,466	392	9,670	1.4

10. BUDGET OF 46 PREFECTURAL UNIONS OF  
AGRICULTURAL COOPERATIVES 1969-70

Income			Expenditure		
	Amount Million Yen	%		Amount Million Yen	%
Contribution of Members	5,569	87.9	Business Expenses	1,576	24.9
Business Income	584	9.2	Personnel Expenses	3,119	49.2
Misc. Income	68	1.1	Administrative Expenses	1,174	18.5
Carried over from Previous Year	104	1.6	Transfer Fund	382	6.0
Others	12	0.2	Reserves	79	1.3
			Others	7	0.1
Total	6,337	100	Total	6,337	100

11. BUDGET OF THE CENTRAL UNION OF AGRICULTURAL  
COOPERATIVE FOR 1969-70

Income			Expenditure		
	Amount Million Yen	%		Amount Million Yen	%
Contribution of Members	616	95.8	Activities for Strengthening Orgs.	44	6.8
Business Income	22	3.6	Guidance Activities	108	16.8
Misc. Income	2	0.3	Educational Activities	60	9.3
Others	3	0.3	International Relations	52	8.1
			Auditing Activities	11	1.8
			Personnel Expenses	196	30.5
			Administrative Expenses	67	10.4
			Others	105	16.3
Total	643	100	Total	643	100

Note: Contribution of Members

(a) National Organisations 65%

(b) Prefectural Unions 35%

12. BUSINESS TURNOVER OF PREFECTURAL ECONOMIC FEDERATIONS  
OF AGRICULTURAL COOPERATIVES - 1967-68

Unit	Marketing of Agricultural Products		Supply of Agricultural Inputs and Consumer Goods	
	Total	Per Federation	Total	Per Federation
Million Yen	1,638,000	34,800	544,000	11,577
Million US\$	4,550	96.7	1,511	32.1

13. BUSINESS TURNOVER OF NATIONAL MARKETING FEDERATION  
OF AGRICULTURAL COOPERATIVES - 1968-69

Commodities	Million Yen	Million US \$
Rice	1,282,248	3,562
Wheat & Barley	60,865	169
Rapeseeds and other cereals	2,058	6
Potatoes and Starches	31,017	86
Fruits and Vegetables	52,859	147
Livestock Products	81,480	226
Others	3,810	11
Total	1,514,337	4,207

14. BUSINESS TURNOVER OF NATIONAL PURCHASING FEDERATION  
OF AGRICULTURAL COOPERATIVES - 1968-69

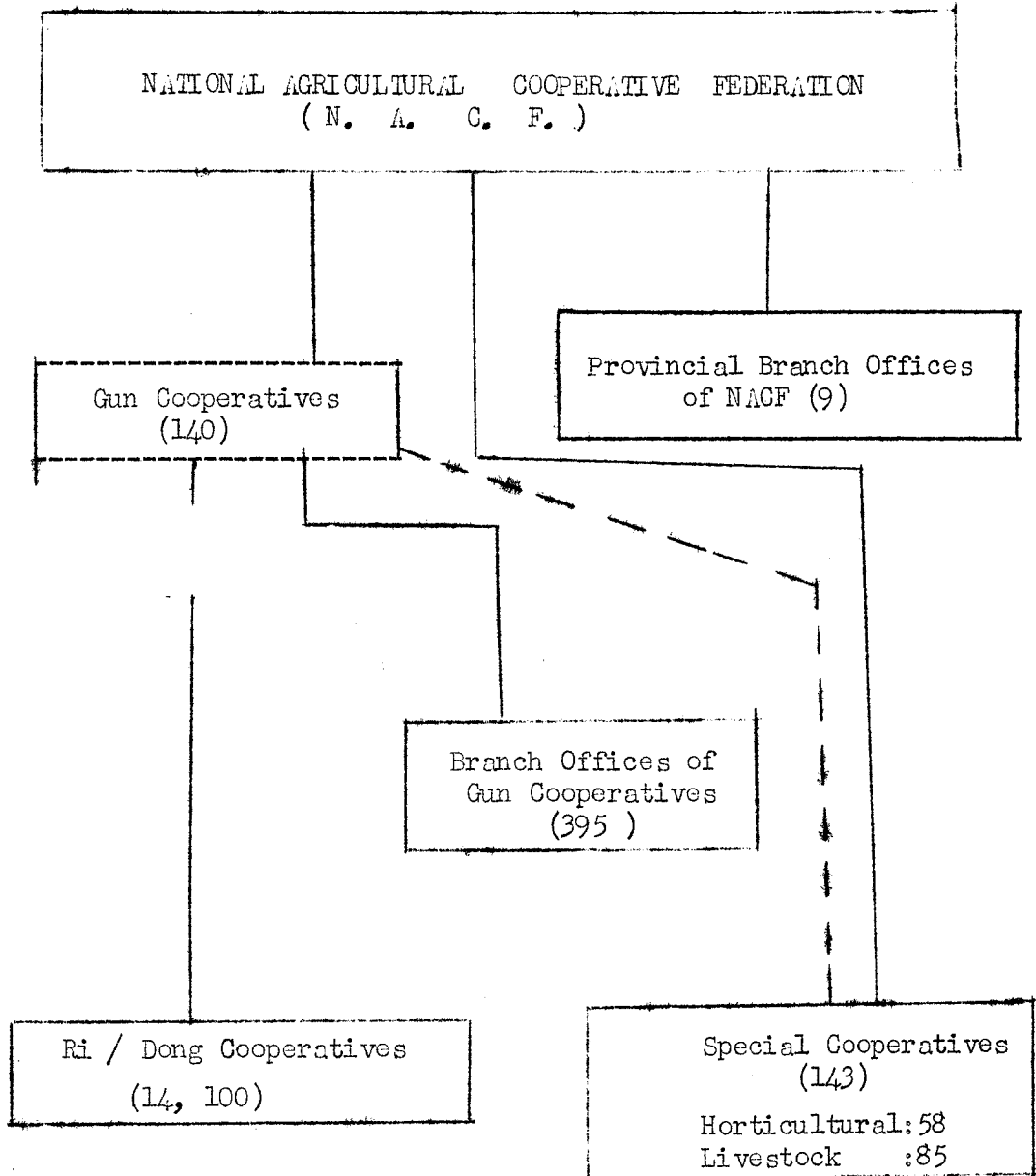
Commodities	Amount of supply	
	Million Yen	Million US \$
Fertilizer	108,401	301
Feedstuff	160,782	447
Agri. Machinery	56,676	157
Agri. Chemicals	37,761	105
Petrol	25,726	71
Others	32,752	91
Sub-total of Farm Inputs	422,098	1,172
Foodstuffs	14,766	41
Clothings	7,048	20
Durable Cons. Goods	15,539	43
Others	6,457	18
Sub-total of Cons. Goods	43,810	122
Total	465,908	1,294

Note: Supply of raw materials to the factories is excluded.

THE REPUBLIC OF KOREA

US \$ 1 = Won 275

ORGANISATIONAL STRUCTURE OF AGRICULTURAL COOPERATIVES  
IN THE REPUBLIC OF KOREA



1. Number of Agricultural Cooperatives, Membership and Employees  
(1967)

Type of Society	No. of Society	Membership	Average No. of Employees per Society
<u>Primary Level:</u>			
Multipurpose	16,963	2,239,336	0.3
Special Coops	172	49,134	8.1
Total	17,135	2,288,470	0.4
<u>County (Gun) Level:</u>			
Multipurpose	139	16,963	60.4
<u>National Level:</u>			
Representative (NACF)	1	282	1,855

2. Financial Status of Agricultural Cooperatives (1967)

Unit : Thousand Won

Type of Society	Share Capital	Owned Capital as percentage of total capital	No. of Coops		Net worth	Total Turnover
			Profit	Loss		
<u>Primary Level :</u>						
Multipurpose	2,311,752	41.7	16,070	893	3,967,272	9,513,127
Special coop	132,000	27.0	107	22	510,000	1,904,000
Total	2,443,752	39.3	16,177	915	4,477,272	11,417,127
<u>County (Gun) Level:</u>						
Multipurpose	631,000	21.3	130	9	1,417,309	66,563,088
<u>National Level :</u>						
Representative (NACF)	416,128	13.3	1	-	977,359	73,298,823



3. LOANS ADVANCED TO FARMERS THROUGH AGRICULTURAL COOPERATIVES (1967)

Unit : Thousand Won

Types of Loan	No. of Loans issued	Amount of loans issued through agricultural coops.	% of overdue from previous loans
Short-term-less than one year		16,479,870	
Medium-term and long-term - more than one year		14,883,283	
Total	978,727	31,363,153	16.0

4. DEPOSITS MADE BY FARMER-MEMBERS WITH AGRICULTURAL COOPERATIVES (1967)

Unit : Thousand Won

Type of Deposit	Amount of Deposit made by members
Current	1,592,232
Fixed	1,869,141
Total	3,461,373

Note: Total amount of deposit including those of non-members reached 27,774,014 thousand won in 1967.

5. SOURCES OF CREDIT TO FARMERS (1967)

Sources	Percentage
Public Institution	4.1
Agricultural Cooperatives	17.7
Non-farmers	18.1
Other farmers	55.2
Others	4.9

6. MARKETING OF AGRICULTURAL PRODUCE ( 1967 )

Unit : Million Won

Main Commodities	Total volume marketed (A)		Volume marketed through agri. coops (B)		B/A (%)
	Qty. (M/t)	Value	QTY (M/T)	Value	
Rice	1,992,494	2,387,000	366,676	16,124	13.6
Barley	690,706	2,400			
Pulses	81,875	29,806	3,554	153	4.3
Raw silk	9,563	3,580			
Apple	182,065	8,193	54,620	2,458	30.
Vegetables			80,353	654	
Sweet potatoes	211,829	12,334	4,385	48	2.0

7. SUPPLY OF AGRICULTURAL INPUTS 2 1967 )

Main Commodities	Vol. Supplied by Coops		Total. Volu. of supply		Sources of Supply		
	Quantity (M/T)	Value Million Won	Quantity (M/t)	Value Million Won	Govt.	Priva- te firm	Coop Firm
Fertilizer	1,339,203	22,582	1,339,203	22,582	74%	26%	
Farm Chemicals	7,040	1,138	9,989		35%	65%	
Farm Machinery	7,475 (EA)	621			88%	12%	
Feedstuff	194,672	34,000	807,000	68,000			

8. PROCESSING UNITS OF AGRICULTURAL COOPERATIVES (1967)

Type of Processing	No. of Coop Processing Units	Volume of Processing (M/T)
Grain Mill	2,950	
Feedstuff	34	22,923
Milk Process	27	7,730
Canning	4	1,598, 000 can

9. STORAGE FOR AGRICULTURAL PRODUCE (1967)

	Warehouse	
	Number	Capacity
Owned	1,644	9,250,565
Rented	852	2,485,591
Total	2,496	11,736,156

10. PURCHASING ACTIVITY OF NACF DURING 1968

Unit: Quantity M/T Value in Million won

	Govt. entrusted		Direct Purchase		Consignment		Total Value
	Qty	Value	Qty	Value	Qty	Value	
Fertilizers	1,354,183	24,525					24,525
Farm Chemicals			4,052	2,045		64	2,109
Farm Equipments				722		198	920
Feedstuff				1		623	624
Seedlings, seed and breeding animals				1,317		106	1,423
Other production materials				90		285	375
Daily necessities						7	7
Total		24,525		4,175		1,283	29,983

11. IMPORTS BY NACF DURING 1968

Item	Quantity	Value (US \$)
Farm Chemicals	80 M/T	241,600
Milk cow	790 Head	549,050
Breeding cow	8 Head	9,080
Farage seed	72 M/T	67,641
Seed bean	60 M/T	33,263
Vegetable seed	47 lbs. 7,392 dl	4,555
Feed	18,579 M/T	1,530,806
Machinery		42,300
Tools & equipment	25 sets	31,262
Total		2,509,557

12. MARKETING BY NACF DURING 1968

Unit: Value in thousand Won

		Quantity (M/T)	Value
General Farm Products	Sliced Dried Sweet Potato	52,864	1,255,000
	Raw Sweet Potato	226,608	1,352,000
	Malting Barley	6,456	207,517
	Corn	3,323	100,000
	Sub Total	394,979	2,914,517
Special Farm Products	Cocoons	15,018	6,381,866
	Rapeseed	3,640	491,225
	Flax stalk	3,042	59,900
	Flax seed	598	32,685
	Ramie	137	21,000
	Castor beans	50	3,804
	Red bean	-	-
	Cotton	91	8,700
	Sub-total	-	6,999,180
TOTAL		-	9,913,697

13. EXPORTS BY NACF DURING 1968

Item	Quantity	V a l u e	
		Thousand Won	Thousand US \$
Hand-woven goods	145,500 ea	4,555	16.7
Mushrooms	18 M/T	17,213	59.4
Scallion pickles	110 M/T	8,086	29.0
Rush products	28,280 Pcs.	5,561	20.0
Pork	6 M/T	1,694	6.0
Dried mushrooms	0.7 M/T	1,026	3.7
Raddish seed	4,680 l	798	2.9
Canned eel	775 C/S	2,645	9.7
Dried Osmund	4 M/T	3,199	11.4
Total		44,777	158.8

M A L A Y S I A

US\$ 1 = M.\$ 3.06

FOR THE YEAR ENDED 31ST DECEMBER, 1966

M.₹

Type of Society	No. of Societies	Membership	Subscription	Deposits	Statutory Reserve	Other Reserves incl. profits	Loans Received during 1966	Loans Outstanding as at 31.12.66	Loans Granted to members during 1966	Outstanding Loans due from Members as at 31.12.66	Total funds
<b>THRIFT &amp; CREDIT IN RURAL</b>											
Rural Credit	1,603	61,220	4,896,618	1,959,151	275,117	1,419,797	1,019,560	3,864,349	2,291,661	7,947,708	12,415,99,
Seasonal Credit	35	1,138	39,958	4,384	2,242	8,311	3,740	44,916	4,860	96,295	
<b>BI URBAN &amp; PLACES OF EMPLOYMENT</b>											
Thrift & Loan	174	144,409	102,310,375	4,377,487	4,563,308	10,355,292	-	-	71,284,936	73,166,083	121,606,
Thrift & Investment	77	8,086	827,969	355,473	16,461	14,059	-	-	28,895	28,766	1,339,
Employees' Credit	193	18,316	5,877,114	21,720	90,041	493,736	-	-	2,010,581	1,455,106	6,482,
<b>PROCESSING &amp; MARKETING</b>											
Fishermens' Credit & Marketing	85	7,460	528,424	27,477	79,522	650,041	120,000	1,472,638	154,253	1,215,417	2,758,
Rice Milling	397	57,924	2,189,479	222,585	906,977	2,118,085	84,892	320,290	19,830	41,984	5,757,
Rubber Marketing	32	2,362	81,690	7,510	16,315	77,714	-	82,554	5,534	48,190	265,
Silversmith	1	60	1,493	-	-	-	-	13,766	-	2,345	15,
Brassware	1	42	484	-	-	2,261	-	-	-	-	2,
Pineapple Marketing	11	1,398	45,401	-	5,405	108,670	10,000	30,353	-	20,001	187,
Timber	4	402	37,877	209	1,142	11,579	-	-	-	-	50,
Weavers	2	83	890	454	93	503	-	-	-	48	1,
Fairs	24	1,988	111,832	9,088	4,565	150,133	-	1,864	240	12,202	257,
Bazaar	1	31	18,430	-	1,185	-	-	-	-	-	19,
Copra	2	48	3,794	-	-	118	-	-	-	-	3,
Electricity	2	646	50,145	13,564	1,574	140	-	-	-	-	65,
Printing	2	74 Ind) 39 Soc)	188,330	32,160	1,230	4,718	-	-	-	-	226,
Transport & Marketing	3	623 Ind) 24 Soc)	5,587	-	-	24,265	-	-	-	-	29,
Coffee Marketing	1	58	1,110	200	-	-	-	-	-	-	1,
Industrial Societies	3	11,534 Ind) 711 Soc)	997,620	663,423	89	860	-	57,083	-	-	1,719,

Type of Society	No. of Societies	Membership	Subscription	Deposits	Statutory Reserve	Other Reserves incl. profits	Loans Received During 1966	Loans Outstanding as at 31.12.66	Loans Granted to members during 1966	Outstanding Loans due from members as at 31.12.66	Total Funds
<b>LAND AND FARMING</b>											
Land Finance	1	45,193	6,878,964	1,475,577	325,998	1,034,765	-	4,635,837	-	-	14,351,
Farming	25	2,125	171,797	2,986	20,197	875,815	-	2,445	15,422	22,715	1,073,
Land Purchase Dev. & Sett.	30	2,269	446,156	237,170	12,885	629,404	12,000	166,439	-	-	1,492,
Breeding	21	1,161	70,399	13,442	4	19,301	-	36,062	-	-	139,
Estate Society	1	106	33,615	50	102	-	-	-	-	-	33,
<b>CONSUMERS</b>											
Rural Malay Shops	90	11,820	439,233	9,756	95,823	345,464	600	3,949	-	-	894,
New Village Shops	26	3,610	214,407	68,731	90,281	200,858	10,985	12,245	-	-	586,
Urban Stores	37	21,499	593,781	31,685	197,921	343,223	4,463	87,942	-	-	1,254,
Stores in Places of Imp.	34	7,742	189,452	21,169	336,263	310,064	307,989	5,479	-	-	862,
Bulk Purchase & Distribution	3	687	76,953	4,566	456	18,795	-	-	-	-	100,
<b>MISCELLANEOUS</b>											
Housing	61	11,585	4,326,735	10,027,020	364,080	2,919,581	13,300,912	27,509,853	2,707,371	5,640,931	45,147,
School	1	-	-	-	-	-	-	-	-	-	-
Transport & Taxi	32	8,116	670,951	96,200	113,061	187,059	148,000	278,651	1,063	8,482	1,345,
Insurance	-1	29,608 (Ind) 130 (Soc)	779,880	753,140	-	9,470,406	-	-	5,000,000	8,398,540	11,003,
General Purpose	43	8,421	103,822	25,549	11,012	70,675	-	1,238	4,600	14,308	212,
Multi-Purpose	3	859	7,163	18,394	-	3,435	-	-	-	-	28,



Type of Society	No. of Societies	Membership	Subscription	Deposits	Statutory Reserve	Other Reserve incl. profits	Loans Received during 1966	Loans Outstanding as at 31.12.66	Loans Granted to members during 1966	Outstanding Loans due from members as at 31.12.66	Total Funds
<b>BANKS</b>											
Apex Bank	1	32 Union)	217,687	50,292	187,020	242,661	2,824,350	9,276,166	2,318,579	8,299,180	9,973,822
Banking Unions	21	1,501 Soc)	898,753	841,880	168,278	816,216	2,541,709	4,793,866	1,130,791	4,045,949	7,518,999
Central Bank	1	72 Soc)	329,125	1,223,156	14,957	29,131	-	-	913,032	1,648,240	1,596,366
<b>UNIONS</b>											
Unions of Thrift & Credit Societies	8	135 Soc)	15,267	729	-	25,275	-	-	-	-	39,277
Rice Milling Union & Fed.	12	222 Soc)	156,847	97,675	88,805	54,580	-	5,532,028	2,271	133,521	5,929,933
Pineapple Marketing Union	2	46 Soc)	2,545	-	83	245	-	-	-	-	2,877
Fishermen's Transport & Marketing Union	2	47 Soc)	27,516	17,890	-	635,452	114,250	1,278,160	-	890,461	1,959,017
Stores Union	1	5 Soc)	7,200	-	-	-	-	-	-	-	7,200
Fed. of Housing Societies	1	13 Soc)	-	-	-	-	-	-	-	-	-
Coop. Union of Malaya	1	5 Soc)	-	-	-	2,574	-	-	-	-	2,574
Malayan Coop. Wholesale Society	1	121 Soc)	21,550	1,565	16,009	162,254	-	972,315	-	-	1,173,659
Coffee Marketing Union	1	3 Soc)	270	-	-	-	-	63,000	-	-	63,277
Poultry Marketing Union	1	5 Soc)	1,978	388	81	9,324	-	31,000	-	-	42,777
	3,115	472,703	134,892,666	22,713,895	8,008,582	33,952,839	20,503,450	60,574,488	87,893,919	113,159,272	260,142,444
	(3,143)	431,051	(420,350,073)	(20,154,645)	(6911,320)	(28,627,406)	(28,295,736)	(51,674,186)	(77,866,863)	(97,230,387)	(227,717,387)
		3,079 Soc)	37 Union)								
		2,938 Soc)	37 Union)								

NOTE: 1965 Statistics are shown within brackets.

2. FEDERATION OF MALAY RURAL CO-OPERATIVE APEX BANK LIMITED

BALANCE SHEET AS AT 31ST DECEMBER, 1966

M. \$

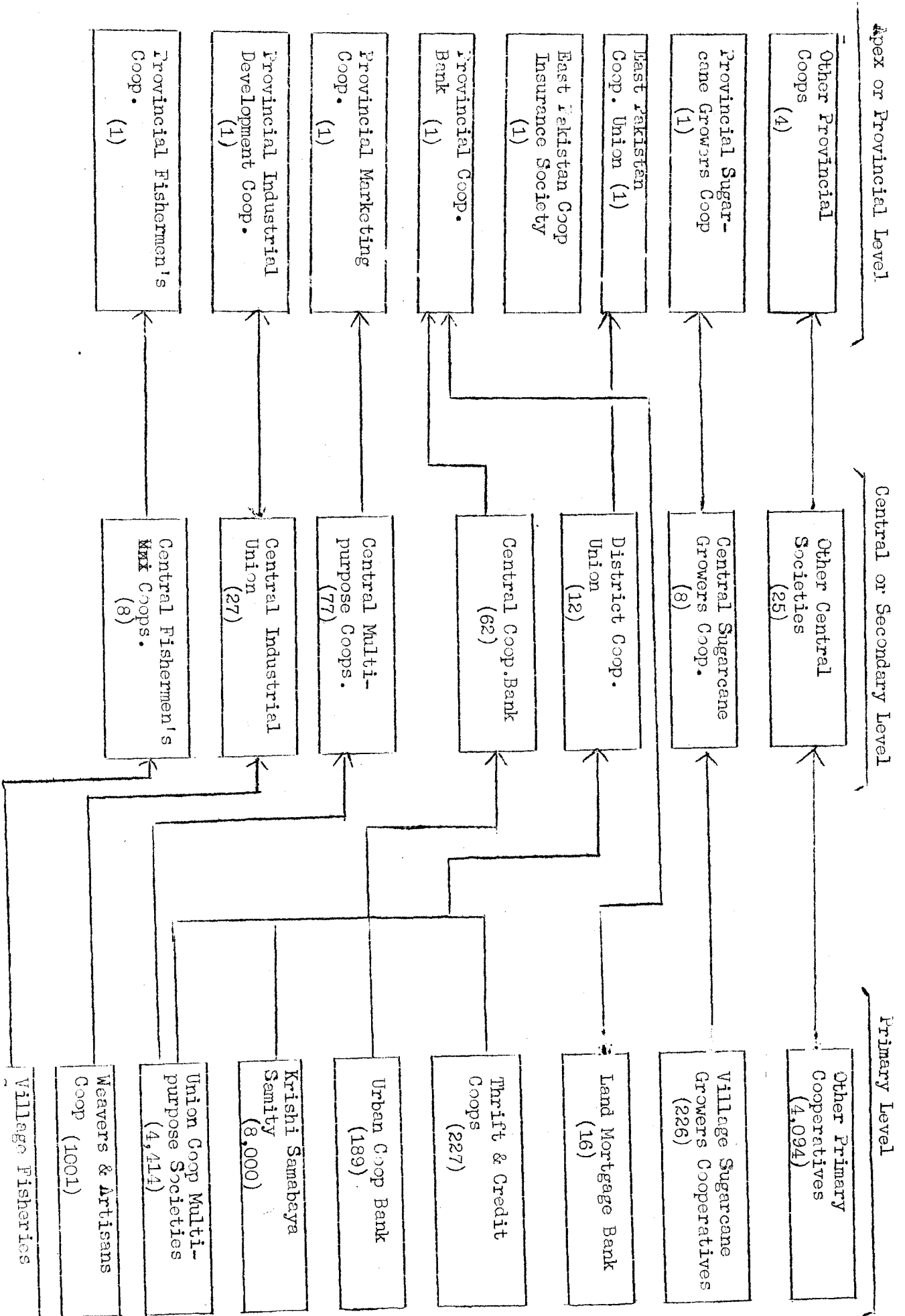
<u>LIABILITIES</u>		<u>ASSETS</u>	
SHARE CAPITAL		CASH AT BANKS	174,539
Ordinary	137,122	INVESTMENTS	
Add - Five Year Plan	80,565	Shares in Cooperative Societies	17,000
		Fixed Deposit in Bank	794,000
UREA AND PAPER PLANT SHARES RECEIVED (HELD)		LOANS TO MEMBERS:	
DEPOSITS		(a) Outstanding at the beginning	11,156,278
STATUTORY RESERVE	50,292	of the year	.. ..
GENERAL RESERVE	187,020	(b) Add - Loans granted to	
	151,000	members during the year	2,318,579
PROVISIONS:		(c) Less - Repaid during the	
(a) Building	24,360	year	5,175,677
(b) Other Provisions	24,143	SUNDRY DEBTORS	4,768
(c) Education Fund	1,000	OTHER SUNDRY DEBTORS	5,058
OUTSIDE LOAN ACCOUNT:		OTHER ASSETS:	
(a) Outstanding Loans at the beginning	11,344,636	Interest accrued	645,233
of the year	.. ..	Less-Provision for doubtful	
(b) Add - Loans received during the		debts	311,781
year	2,824,350	LAND AND BUILDINGS	520,323
(c) Less - Loans repaid during the			
year	14,168,986		
	4,892,820		
SUNDRY CREDITORS	81,179		
OTHER LIABILITIES (INTEREST DUE)	93,315		
PROFIT AND LOSS ACCOUNT:	42,158		
	10,148,320		
			8,299,180
			4,768
			5,058
			333,452
			520,323
			10,148,320



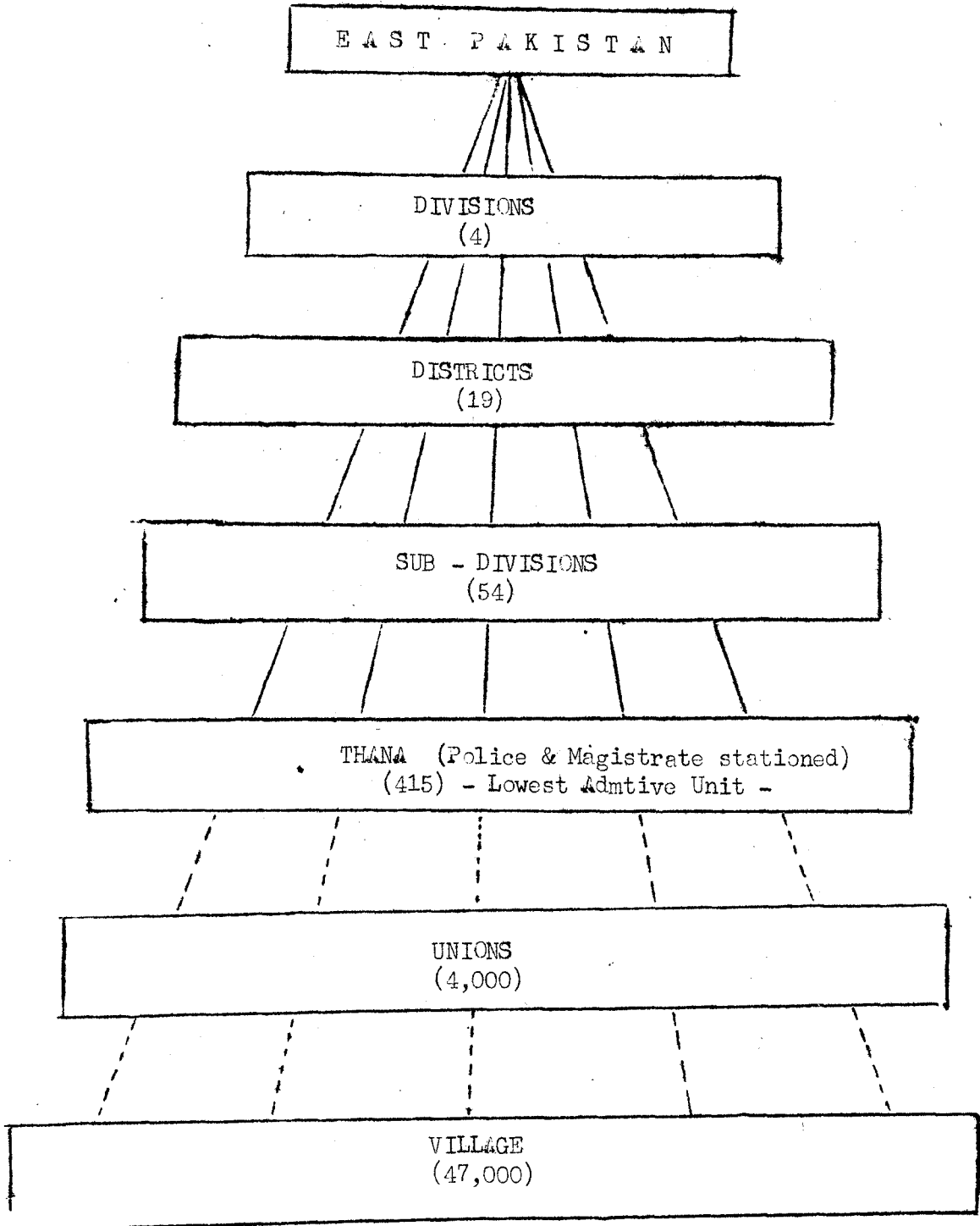
PAKISTAN

US\$ 1 = Pak.Rs.4.76

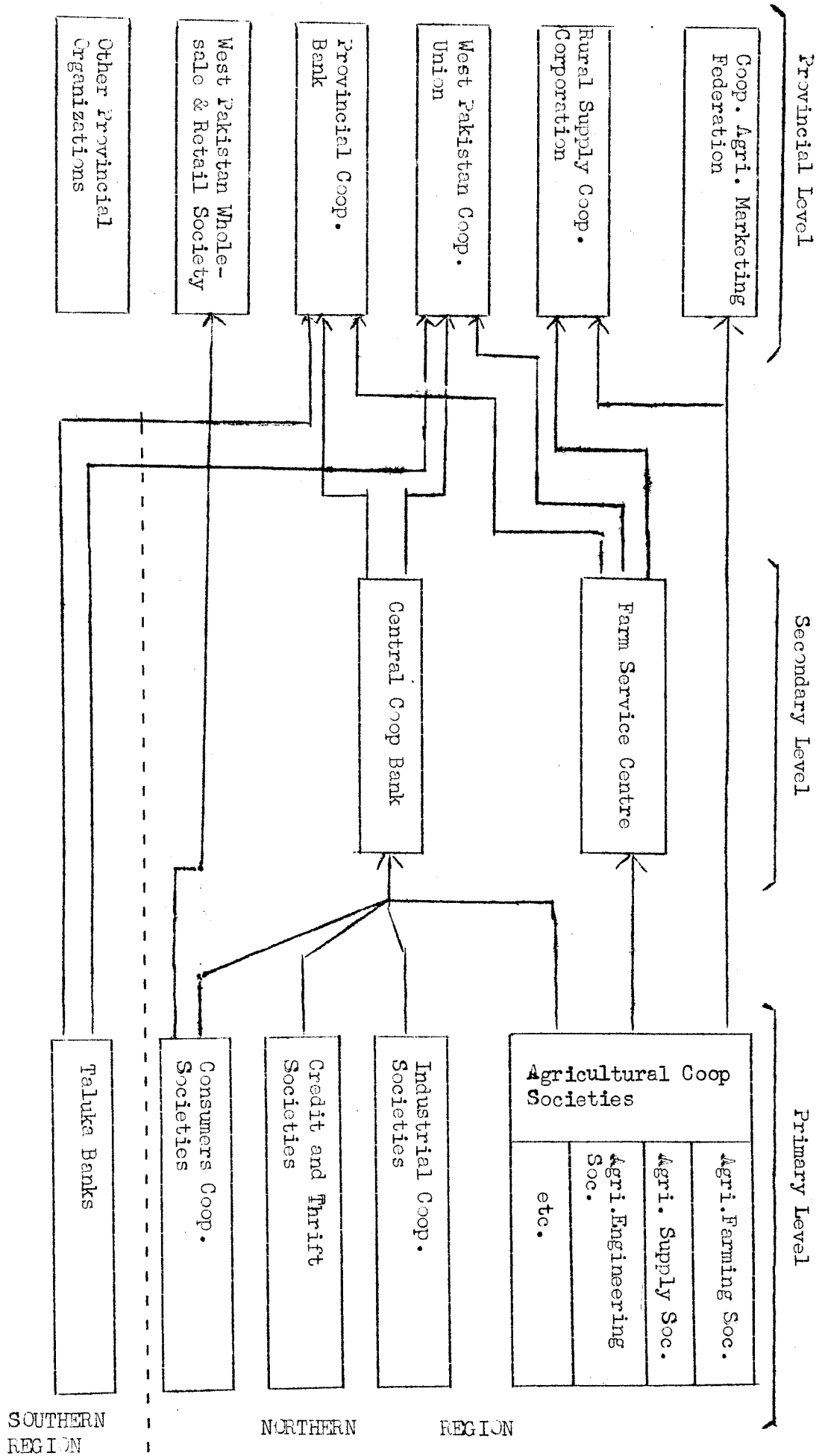
ORGANIZATIONAL SET-UP OF COOP SOCIETIES IN EAST PAKISTAN



ADMINISTRATIVE DIVISION OF EAST PAKISTAN



ORGANIZATIONAL SET-UP OF COOP SOCIETIES IN WEST PAKISTAN



1. NUMBER OF COOPERATIVE SOCIETIES AND MEMBERSHIP  
IN EAST PAKISTAN (1967-68)

Classification	No. of Socs.	Members	
		Societies	Individuals
Provincial Societies (11 types)	11	2,486	
Central Societies (12 types)	219	11,628	
Primary Agri. Credit Societies (8 types)	6,534		1,291,038
Primary Agri. Non-Credit Societies (21 types)	1,206		55,506
Primary Non-Agri. Credit Societies (9 types)	688		106,389
Primary Non-Agri. Non-Credit Societies (17 types)	564		79,156
Commercial Societies (6 types)	709		67,835
Industrial Societies (17 types)	1,094		186,812



2. WORKING OF SOCIETIES IN EAST PAKISTAN FOR 1967-68

Unit: Pakistan Rs.1,000

	No. of Socs.	Members	Paid-up Share Capital	Reserves	Deposit	Loans held at the end of year	Working Capital	Outstanding Interest	Interest Payable	Sale and Purchase Purchase Sale	Net Profit (+) or Loss (-)
Provincial Socs.	11	Socs. 2,486	17,418	2,470	19,210	136,963	176,061	9,693	8,490	3,823 4,035	(+) 1,221
Central Socs.	219	Socs. 11,628	13,146	5,415	15,381	156,220	190,161	14,075	8,191	16,867 19,256	(+) 1,646
Primary Agri. Socs.	6,534	Individuals 1,291,000	19,999	4,516	14,375	93,714	132,604	15,772	9,083	5,180 5,541	(+) 1,840
Primary Agri. Non-Credit Socs.	1,206	Indvcls. 55,506	905	808	888	1,890	4,488	407	180	323 590	(+) 92
Primary Non-Agri Credit Socs.	688	Indvcls. 106,389	3,677	2,515	5,914	4,364	16,470	1,372	368	1,615 1,828	(+) 200
Primary Non-Credit Socs.	564	Indvcls. 79,156	5,798	4,107	9,041	4,135	20,363	134	519	997	(+) 137
Commercial Socs.	709	67,635	945	1,280	709	1,359	4,293	253	169	3,098 3,541	(+) 108
Industrial Socs.	1,094	Indvcls. 186,812	3,482	526	1,021	10,296	15,325	2,172	1,487	5,631 790	(+) 98

### 3. TYPES OF SOCIETIES IN WEST PAKISTAN

Type of societies	1957-58 No. of Socs.	31.12.67 No. of Socs.	Increase
1. Provincial Coop. Banks	1	2	1
2. Central Coop. Banks and Unions	64	76	12
3. Central Non-credit	59	97	38
4. Agricultural Credit Societies	11247	14400	3153
TOTAL:	11371	14575	3204
<u>5. Agricultural Non-Credit Societies</u>			
i) Service Coop. Socs.	-	2580	2589
ii) Sale societies and Commission shops & marketing	95	153	58
iii) Sugarcane societies	448	609	161
iv) Coop. Farming (including better farming)	422	475	53
v) Tubewell societies	179	313	134
vi) Mills and Multi-purpose.	15	193	178
vii) Fishermen Coop. Societies	-	15	15
viii) Consolidation of holding societies	846	851	5
ix) Anti erosion and Land Reclamation Societies	479	484	5
x) Other societies	1311	1413	102
Total:	3795	7095	3300
6. Non-Agri. Credit Societies	920	1500	580
<u>7. Non-Agri. Non-Credit Societies</u>			
i) Stores	256	426	170
ii) Purchase and sale	14	48	34
iii) Housing societies	84	367	283
iv) Industrial societies	1320	1640	320
v) Motor transport socs.	20	53	33
vi) Other societies	3514	3514	-
TOTAL:	5208	6048	840
GRAND TOTAL:	21294	29218	7924

4. COOPERATIVE MOVEMENT AT A GLANCE IN WEST PAKISTAN

Unit: Amount in P. Rs.1,000

	1957-58	31.12.67	Net increase	Percentage
1. No. of societies	21,294	29,218	7,924	37 %
2. No. of members	993,000	1,691,456	698,456	73. %
3. Percentage of population covered by Cooperatives	-	-	-	25 %
(P. Rs. in Thousand)				
4. Share Capital in lacs	43,575	140,900	97,325	3 times
5. Reserve Fund	32,221	66,296	34,075	2 "
6. Other Funds	99,404	135,431	36,027	1½ "
7. Owned Funds	131,625	201,727	70,102	1½ "
8. Working Capital	501,812	1,279,600	738,788	2½ "
9. Outside Capital	402,508	982,500	580,000	2½ "
10. Loans advanced to individuals in the year	436,503	322,143	104,300	24%
11. Loan advanced to societies in the year	419,825	576,639	166,814	39.09
12. Loans advanced to societies during decade	-	4,221,191	-	-
13. a) Loan advanced to individuals during the decade	-	5,607,648	-	-
b) Loan advanced by agri:Sector during the decade. Societies to individuals.	-	797,241	-	-
14. Loans held at the close of the year.				
A) Societies		269,371		
B) Individuals		370,392		
15. No. of debtors		392		
16. Deposits held by Banks at the close of the year	254,565	269,600	14,935	6 %
17. Deposits held by societies at the end of the year	297,842	250,826	47,016	18.1 %
18. Recoveries made during the year. Individuals.	34,800	309,897	364,939	8½ times
19. Recoveries made during the year. Societies	415,724	559,675	143,951	34.6 %
<del>20x</del> Recoveries made during the decade from Individuals		3,360,654		
20. -do- Societies		4,052,091		
21. Loans obtained from State Bank of Pakistan during decade		209,450		

	1957-58	31.12.67	Net Increase	Percentage
22. Deposits received during the year	297,842	869,417	571,575	3 times
23. Investment made by Coop. in Govt. Securities	24,856	72,523	47,667	3 "
24. Land & Building	180	11,598	11,398	64 "
25. Share held by Banks & Societies	2,008	8,868	6,860	4 "
26. Other Investments	30	486	456	15 "
27. Savings Certificates	230	1,579	1,349	7 "
28. Bad and doubtful debts reserves built	6,300	15,000	8,700	2½ "
29. Union Council service Coops. organized	-	2,589	2,589	2589 times
30. Fertilizer distributed during decade 1962 to 31.12.67		1,045 thousand tons bags worth Rs.26,880	i.e. 16,900 thousand Million	
31. Machinery purchased (Agri.)	800	5,700	4,900	7 times
32. Agricultural credit societies				
i) Number	11,247	14,400	3,153	28 %
ii) Membership	377,000	644,000	267,000	71 %
iii) Working Capital	62,949	165,000	2,051	1.03 %
33. Loan advanced to Agri.Sector	52,799	70,762	17,963	34 %
34. Farm Service Centre organized	-	7	7	7 times
35. Farm sub-centre organized	-	150	150	150 "
36. No. of operators trained in the Coop. Workshop	-	612	-	-
37. Area brought under Coop.Farming (figures in lacs)	1.55 acres	2.50 acres	.95 acres	1½ "
38. A) Area mechanized through Coop. Farming	0.01 acres	2.00 acres	1.99 acres	200 "
B) Subsidy provided for the purpose		5,209		
39. Fleet of tractors maintained by cooperatives	-	250	250	250 "
40. Tubewells installed by Coops.	40	1,000	960	25 "
41. Agri. produce handled through cooperatives	3,725	56,200	52,475	15 "
42. House constructed through coops.	15,000	50,000	35,000	3½ "
43. Godowns constructed in Rural areas by large sized socs.	-	300	300	300 "
Amount spent	-	3,000	3,000	30 "
44. Godowns constructed by Coop. Marketing Societies				
i) Number			50	
ii) Amount spent			1,250	

	1957-58	31.12.67	Net increase	Percentage
45. Large sized socs. organised			600	
46. Small sized socs. organized			6,000	
47. Other type of societies organized			1,324	
48. Share participations grant provided by Government			9,500	
49. Secretaries of primary societies trained			1,631	
50. Agri. Coop. Workshops set up.			8	
51. a) Education College:				
i) Set up			1	
ii) Cost			1,100	
b) Coop. Institutes:				
i) Set up			3	
ii) Cost			1,500	
c) Coop. Hostel organized			1	
52. <u>Industrial Societies</u>				
i) Value of finished goods produced	13,230	36,702		3 times
ii) Value of finished goods sold	5,003	44,295		8 times
53. <u>Cycles manufactured by Coop. Societies</u>				
Cycle factories set		1		
Sales of cycles during the year	1,740,228	14,636,189		8½ times
Sales during the decade		70,513,852		
Fixed Assets	776,654	7,088,987		9 times
Annual production of cycles		67,848 pieces		
54. <u>Motor Transport</u>				
1. Roading stock owned by the societies.				
i. Buses	416	874		
ii. Taxies	-	77		
iii. Trucks	9	10		
	<u>425</u>	<u>961</u>		2 times
55. <u>Super Market acquired at Karachi</u>				
Cost		4,817		
56. <u>Fruit Market acquired at Karachi</u>				
Cost		Rs. 800		
57. <u>Karkhana Alate Zari Bahawalpur</u>				
Cost		Rs. 729		

PHILIPPINES

US\$1 = ₱. 3.9



1. STATUS OF FaCoMa

AS OF JUNE 30, 1968

	1965-66	1966-67	1967-68
1. Total No. of FaCoMa	578	602	626
2. Aggregated Authorized Capital	₱ 42,207,700	₱ 48,936,700	₱ 51,366,725
3. Aggregated Paid-up Capital	7,878,538	10,583,166	11,361,300
4. Total Membership	314,272	352,683	360,454
5. Classification:			
(a) By Organizational Structure			
(1) Local	543	565	584
(2) Centralized/Large Assocs.	13	15	20
(3) Federation	22	22	22
Total	578	602	626
(b) By Operating Status			
(1) Active	185	217	263
(2) Limited Activity	107	69	48
(3) Inactive	286	316	315
Total	578	602	626
(c) By Crop Handled			
(1) Palay	361	366	369
(2) Tobacco	101	114	127
(3) Copra	52	50	50
(4) Poultry & Livestock	20	24	27
(5) Sugar	18	21	24
(6) Fruits and Vegetables	7	7	7
(7) Fish	7	7	8
(8) Coffee, Cacao & Peanut	5	5	5
(9) Fiber	3	3	3
(10) Garlic and Onion	2	2	2
(11) Processing	2	2	2
(12) Supply	-	1	1
(13) Irrigation	-	-	1
Total	578	602	626



2. COMPARATIVE STATEMENT ON SERVICES TO COOPERATIVES  
AS OF JUNE 30, 1968

Services	1964-65	1965-66	1966-67	1967-68
New FaCoMas Registered/ Affiliated	10	31	24	24
Activated FaCoMas Revitali- zed	3	5	9	9
Dormant FaCoMas Reactivated	13	21	19	25
FaCoMas Audited	63	114	138	161
FaCoMas Extended Loan	60	68	99	123
Management Personnel Trained	-	-	110	236

3. LOAN RELEASES BY TYPE

Unit: Peso 1,000

Type of Loan	1967-68
Production	23,902
Commodity	6,988
Merchandizing, Marketing	1,019
Facility	72
Total	31,981

4. DISTRIBUTION OF PRODUCTION LOAN  
BY PROGRAMME DURING 1967-68

Unit: Peso 1,000

Land Reform	Self - Sufficiency		Total
	Direct to Farmers	Thru Coops	
3,040	3,080	17,782	23,902

5. MEMBERSHIP OF NON-AGRICULTURAL COOPERATIVES  
AS OF DECEMBER 31, 1966

	Membership
Credit Unions	144,078
Consumers Societies	33,002
Industrial Societies	2,200
Housing Societies	199
Service Societies	7 274
Total	179,753

THAILAND

US\$ 1 = Baht 20.80

1. FINANCIAL STATUS OF AGRICULTURAL COOPERATIVES (1967)

* Type of Coops		No. of Soc. (1968)	Member-ship (1968)	Share Capital (Million Baht)	Owned Capital as % of total capital	No. of Socs with Prof- Loss it		Net Worth (Million Baht)	Total Turnover (Million Baht)
Primary	Multi-purpose	2	3,413	0.68	6	2	-	11.36	94,682
	Credit	9,870	286,757	286.50	35	9446	396	818.96	43,287,231
	Marketing	106	60,119	9.98	12	89	17	83.10	8,356,227
	Supply	85	84,615	5.41	16	59	19	34.54	4,359,401
	Land Coop	49	39,125	4.92	6	506	6	80.36	3,271,232
	Total	10,554	474,029	307.49	30	10,102	438	1,028.32	59,368,773
Provincial	Credit	2	3,357	2.01	13	2	-	15.87	255,597
	Processing	1	149						
	Total	3	3,506						
National	Representative	1	10,554						

\* Existing societies are largely classified into 5 types at primary level.

2. TOTAL NUMBER OF SOCIETY, MEMBERSHIP, AND LANDHOLDING  
CLASSIFIED ACCORDING TO TYPES OF CO-OPERATIVES

AS OF DECEMBER 31, 1966

Types of Co-operatives	No. of Societies (Co-op.)	Membership (Household)	Landholding (Rai)
<u>Agricultural Co-operatives</u>			
1. Village Credit Co-operatives	9,869	154,180	6,825,072
2. Production Credit Cooperatives	10	3,401	156,180
3. Provincial Federations of Credit Cooperatives	2	2,492 274 societies	-
4. Land Improvement Co-operatives	151	24,777	562,491
5. Land Improvement & Credit Co-operatives	4	1,062	25,369
6. Land Settlement Cooperatives (Agriculture)	266	5,460	146,956
7. Land Settlement Cooperatives (Salt Production)	17	231	7,868
8. Land Settlement Cooperatives (Fish culture)	6	84	7,110
9. Land Hire-purchase Cooperatives	53	862	42,512
10. Land Tenant Cooperatives	20	335	14,131
11. Paddy Marketing Cooperatives	119	74,258	-
12. Provincial Federations of Paddy Marketing Cooperatives	2	809	-
13. Rubber Processing Cooperatives	14	21 societies 1,354	-
14. Umbrella Making Cooperatives	1	249	-
15. Silk Processing Cooperatives	1	158	-
16. Bamboo Processing Cooperative (Basket)	1	156	-
17. Fish Processing Cooperative (Fish sauce and Fish products)	1	1,386	-
18. Tobacco Processing Cooperatives	1	122	-
19. Sugar-cane Processing Cooperatives	2	734	-
20. Salt Marketing Cooperative	2	745	-
21. Palm-sugar Marketing Cooperative	1	309	-

Types of Co-operatives	No. of Societies (Co-op.)	Membership (Household)	Landholding (Rai)
22. Fish Culture Cooperatives	2	770	-
23. Livestock Raising and Marketing Cooperatives	13	3,721	-
24. Federations of Livestock Raising and Marketing Cooperatives	4	441 2 societies	-
25. Farm Product Marketing Cooperatives	11	6,081	-
26. Credit & Marketing Cooperatives	2	184	-

**3. COMPARISON OF TOTAL WORKING CAPITALS OF COOPERATIVES  
BY BUSINESS DEPARTMENTS**

DURING 1961 - 1965

(Million Baht)

Types of Cooperatives	1961	1962	1963	1964	1965
<u>CREDIT COOPERATIVES</u>					
1. Village Credit	377.1	369.5	359.6	356.2	379.3
2. Provincial Federations of Village Credit	10.7	10.5	10.5	12.6	13.3
3. Thrift and Credit for Salary Earners	73.2	109.2	148.4	189.9	235.8
4. Production Credit	2.9	4.4	4.8	7.4	11.9
Total	463.7	493.6	523.3	566.1	640.3
<u>LAND COOPERATIVES</u>					
1. Land Settlement (Agriculture)	3.8	4.2	4.5	5.8	7.5
2. Land Settlement (Salt Production)	1.0	1.0	1.0	1.0	0.9
3. Land Improvement	3.9	4.7	6.6	11.3	14.0
4. Land Hire-purchase & Housing	14.6	16.1	18.7	11.5	7.8
5. Land Hire-purchase	7.0	7.3	7.2	8.5	8.6
6. Land Improvement & Credit	2.1	2.3	2.3	2.7	2.6
7. Land-Tenant	6.1	6.2	6.2	6.4	6.5
8. Land Settlement (Fish culture)	-	0.2	0.3	0.3	0.3
Total	38.5	42.0	46.8	47.5	48.2
<u>MARKETING COOPERATIVES</u>					
1. Cooperative Stores	35.3	37.4	37.4	37.8	34.5
2. Paddy Marketing	59.1	58.7	58.0	54.5	45.3
3. Credit & Marketing	0.6	0.7	0.5	0.5	0.6
4. Salt Marketing	3.9	3.9	5.7	8.9	14.4
5. Fish Processing & Marketing	5.9	5.6	5.5	5.6	5.8
6. Cooperative Federations	6.9	21.6	21.8	21.5	21.4
7. Utilities	1.6	1.6	2.4	2.4	2.3
8. Livestock Raising	7.2	3.0	6.9	6.5	5.2
9. Farm Products	1.1	1.5	2.2	1.8	2.5
10. Industrial	5.1	5.0	3.8	3.8	3.6
11. Ice & Refreshment	1.2	1.9	1.4	1.8	2.1
Total	127.9	140.9	145.6	145.1	137.7
Grand Total	630.1	676.5	715.7	758.7	826.2

4. RATIO OF OUTSTANDING COOPERATIVE PROMOTION FUND SUBSIDIZED  
BY THAI GOVERNMENT TO WORKING CAPITAL OF  
MARKETING AND LAND COOPERATIVES.

DURING 1961 - 1965

(1961 = 100)

(Million Baht)

Year	Marketing Co-ops.			Land Co-ops.		
	Coop.Pro.Fund	Wkg.Capital	Ratio	Coop. Pro. Fund	Wkg.Capital	Ratio
1961	81.6 (100)	127.8 (100)	1:1.6	8.9 (100)	38.5 (100)	1:4.3
1962	79.9 (97.9)	140.9 (110.2)	1:1.8	8.7 (97.7)	42.0 (109.0)	1:4.8
1963	80.5 (98.6)	145.6 (113.9)	1:1.8	9.5 (106.7)	46.8 (121.5)	1:4.9
1964	83.3 (102.2)	145.1 (113.5)	1:1.7	13.3 (149.4)	47.5 (123.3)	1:3.6
1965	80.9 (99.1)	137.7 (107.7)	1:1.7	16.9 (189.8)	48.2 (125.1)	1:2.8



A SOURCES OF INFORMATION

Statistical data was compiled from the following materials :

- Part I
- i) FAO - Production Year Book 1968
  - ii) Asian Agricultural Survey - Asian Development Bank
- Part II
- Australia
- i) Report and Accounts for year ended 30th June, 1969 - The Cooperative Federation of Australia.
  - ii) Cooperation in Australia - The Cooperative Federation of Australia
- Ceylon
- i) Report on the Ceylon Cooperative Movement for the year 1966-67
  - ii) Information supplied by member organization.
- India
- i) Statistical Statements relating to The Cooperative Movement in India 1966-67 - Reserve Bank of India
  - ii) Report 1968-69 - Department of Cooperation, Ministry of Food, Agriculture, Community Development and Cooperation.
  - iii) Progress of Cooperative Agricultural Marketing, Processing, Supplies and Storage in India, 1966-67 - Statistical Statements.
  - iv) Information supplied by member organization.
- Iran
- i) Statistical Information relating to the Working of Cooperatives - CORC
- Japan
- i) Statistics on Agricultural Cooperatives - 1967 Business Year - Ministry of Agriculture and Forestry.
  - ii) The Outline of Agricultural Cooperatives in Japan - Ministry of Agriculture and Forestry.

- iii) Agricultural Cooperative Year Book  
1970 - The Central Union of  
Agricultural Cooperatives
  - iv) Agriculture & Agricultural Cooperative  
Movement in Japan - The Central Union  
of Agricultural Cooperatives.
- Korea, Rep. of
- i) Annual Report of NACF - 1968
  - ii) Information supplied by member  
organization.
- Malaysia
- i) Statistical Statements relating to the  
Cooperative Movement in West Malaysia -  
1966 - Division of Cooperative  
Development, Ministry of Agriculture  
and Cooperatives.
- Pakistan
- i) Annual Departmental Report for the  
year 1967-68 by the Registrar of  
Cooperative Societies, Government of  
East Pakistan.
  - ii) Cooperative Movement in West Pakistan  
1958 - 1968 - Cooperative Department,  
Government of West Pakistan.
- Philippines
- i) 21st Annual Report 1966-67 --  
Cooperative Administration Office
  - ii) Annual Report - Consolidation and  
Expansion 1967-68 - Agricultural  
Credit Administration
- Thailand
- i) The Cooperative Movement in Thailand  
- Office of the Under Secretary of  
State, Ministry of National Development
  - ii) Information supplied by member  
organization.

APPENDIX - B

B. CURRENCY CONVERSION TABLE

Australia	Dollar	Aust \$ 1 = US\$ 1.12
Ceylon	Rupee	US\$ 1 = Rs. 5.95
India	Rupee	US\$ 1 = Rs. 7.50
Iran	Rial	US\$ 1 = Rl.75.75
Japan	Yen	US\$ 1 = ¥ 360
Korea	Won	US\$ 1 = <del>W.</del> 275
Malaysia	Dollar	US\$ 1 = M\$ 3.06
Pakistan	Rupee	US\$ 1 = Rs. 4.76
Philippines	Peso	US\$ 1 = ₱ 3.90
Thailand	Baht	US\$ 1 = B.20.80

APPENDIX - C

C. WEIGHTS AND MEASURES

Area

1 hectare = 2.47 acres

1 acre = 0.4 hectare

Yield

100 Kg per hectare = 1.5 bushels (60 lb) per acre

1 bushel (60 lb) per acre = 67.3 Kg per hectare

Weight

1 Kg = 2.2 pounds

1 Metric ton (M/T) = 1,000 Kg

1 M/T = 21.7 Spanish quintals Philippines

1 Spanish quintal = 0.05  
M/T

1 M/T = 26.8 maunds India, Pakistan

1 maund = 0.04 M/T

1 M/T = 266.7 Kwan Japan, Korea, Rep. of

1 Kwan = 0.004 M/T

1 M/T = 16.7 piculs (pikuls) Thailand

1 picul = 0.06 M/T

1 M/T = 16.5 piculs Malaysia

1 picul = 0.06 M/T

APPENDIX - D

D. Unit weights of selected commodities by countries

Commodity & Country	Unit	Approximate Net weight		
		Kg	lb	
Wheat: Australia	bushel	27.215	60	
	Japan	136.875	301.759	
	Korea, Rep. of	138	304.238	
Barley: Australia	bushel	22.680	50	
	Japan	108.750	239.754	
	Korea, Rep. of (Polished)	141	310.851	
Maize: Australia	bushel	25.401	56	
	Ceylon	26.308	58	
	Japan	131.250	289.358	
Paddy: Australia	bushel	19.051	42	
	Ceylon	20.865	46	
	Japan (Brown)	150	330.693	
	Korea, Rep. of	100	220.462	
	Malaysia	gantang	2.540	5.600
	Philippines	cavan	44	97.003
	Thailand (for export)	kwien	1,010	2,226.67
Milled Rice: Ceylon	bushel	29.030	64	
	Korea, Rep. of	suk	144	317.465
	Thailand (cargo)	kwien	1,320	2,910.098