

LIBRARY

WORKING DOCUMENT ON ACTION RESEARCH AND RURAL DEVELOPMENT FOR WEAKER SECTIONS AND BELOW POVERTY LINE FAMILIES THROUGH COOPERATIVE ACTION

(Project undertaken by Shree Warana Sahakari Sakhar Karkhana Limited,
Warananagar, Kolhapur, Maharashtra State (India)—March, 1983).

by

Dr. G. Ojha
Education Officer



INTERNATIONAL COOPERATIVE ALLIANCE
Regional Office & Education Centre for South-East Asia,
"Bonow House", 43, Friends Colony, New Delhi-110065 (India).

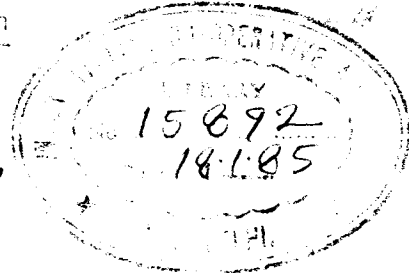
WORKING DOCUMENT ON ACTION RESEARCH AND RURAL DEVELOPMENT
FOR WEAKER SECTIONS AND BELOW POVERTY LINE FAMILIES
THROUGH COOPERATIVE ACTION (PROJECT UNDERTAKEN BY SHREE
WARANA SAHAKARI SAKHAR KARKHANA LIMITED, WARANANAGAR,
KOLHAPUR, MAHARASHTRA STATE, INDIA - MARCH 1983).

Prepared by

Dr. G. Ojha
Education Officer,
ICA ROEC, New Delhi.

In consultation with

V.D. Jashi
Project Officer,
DRDA, Kolhapur.



334.4.63(549)

INTERNATIONAL COOPERATIVE ALLIANCE
Regional Office & Education Centre for South-East Asia,
"Bonow House", 43 Friends Colony, New Delhi-65, INDIA.

CONTENTS

<u>S.No.</u>		<u>Page No.</u>
1.	ACTION RESEARCH - NEED AND PURPOSE.	1
2.	PREMISES	1
3.	FORCES AT PLAY AFFECTING DEVELOPMENT EFFORTS.	2
4.	SUPPORTING THE WEAKER SECTION THROUGH VARIOUS DEVELOPMENT PROGRAMME AND GROUP ACTION.	3
5.	ACTION ORIENTED RESEARCH - OBJECTIVES & METHODOLOGY	4
6.	ORGANISING GROUP FOR ACTION - METHODOLOGY OF OPERATION.	7
7.	FUNCTIONAL ARRANGEMENTS.	
	(A) FORMULATION OF STEERING COMMITTEE	9
	(B) FORMATION OF FUNCTIONAL COMMITTEE AT BLOCK LEVEL.	9
	(C) FUNCTIONAL ARRANGEMENT AT THE VILLAGE LEVEL	10
	(D) ACTION PLAN (ECONOMIC INVESTIGATOR AND THE GRAM VIKAS ADHIKARY)	10
	(E) FUNDING OF THE PROGRAMME (FINANCIAL SUPPORT)	11
	(F) INITIATING ACTION PROGRAMME IN TWO VILLAGES	12
	(G) MONITORING AND EVALUATION PROCEDURE	12
8.	A MODEL VILLAGE SURVEY SCHEDULE AND VILLAGE ACTION PROFILE FOR ACTION ORIENTED RESEARCH.	14
9.	A MODEL HOUSEHOLD SURVEY SCHEDULE	27
10.	A MODEL FAMILY PROFILE SCHEDULE.	59

1. ACTION RESEARCH - NEED AND PURPOSE

1. One of the guiding propositions of the proposed action oriented research is that it should eventually produce 'tangible benefits' to the weaker sections of the rural community.
2. That the action oriented research will lead to tangible action programmes in the form of several micro projects involving the target group.
3. That the action oriented research will be particularly participative in character wherein the prospective beneficiaries are to be involved in the 'research and action'.
4. Lack of participation in development efforts by the target group often result in poor performance. Participants of the target group in identification of 'needs' and working out 'action programme' will be the main focal point in this research.
5. If the experimental action programme is to be implemented as the result of action under serial (4) then the DRDA/Cooperatives and other service organisations will have to provide umbrella support under various financial schemes of NABARD, Khadi and Village Industries Board, etc.

2. PREMISES

- 2.1 A substantial proportion of the rural population is living below the line of poverty. The estimate of such population is roughly 50%.
- 2.2 All the population living below the line of poverty are at near subsistence level. While the total population falling under this economic group is poor, there are many social and professional groups who are poorer.
- 2.3 The benefits of Governmental and institutional development efforts elude them or are cornered by vested interest. In case of small farmers the present forces of social and economic changes push large section of this population towards increased marginalisation and eventually landless.
- 2.4 Development assistance in the past through institutional support had largely been confined to such people among this group who had been relatively better.

- 2.5 The patron-client relationships of the traditional village society offer no longer even the subsistence security that ~~is~~ used to give to the poor segments of the population.
- 2.6 The service organisations are facing the dual problem of mounting overdues and continued support.

3. FORCES AT PLAY AFFECTING DEVELOPMENT EFFORTS

- 3.1 Land holdings are becoming smaller and more fragmented.
- 3.2 Public lands are shrinking and deteriorating.
- 3.3 Public water sources are drying up. In cases where they exist, the poorer segment does not have the ability, resources and planning to exploit it.
- 3.4 Agricultural yields are becoming instable - bringing instability in market conditions.
- 3.5 Non-traditional off-farm activities are too capital intensive for individuals to carry out.
- 3.6 Traditional crafts are disappearing.
- 3.7 ^{The} ~~the~~ rich in the village feels less and less concerned about the survival and welfare of the poor.
- 3.8 State Development efforts have not been able to make desired impact so far the weaker section of the society is concerned.
- 3.9 Cooperative institutions with largest organisational network have so far been able to make its impact in improving the economy of the weaker sections in 'localised' pockets.
- 3.10 The efforts of the Nationalised Banks have also not been able to create significant impact in improving the economy of the weaker section. The policy pursued by them continues to be security oriented.
- 3.11 The state distributive mechanisms are more complex and suffer from inadequate management. The implementing staff are more concerned with achieving of targets than with the quality of service. The same is true to a large extent, in respect of various service organisations. Provisions under various schemes and the rules and

procedures prescribed are often inadequately defined and in most cases unknown to the weaker section.

- 3.12 Often the identification of beneficiaries leave much to be desired.
- 3.13 Application of the support schemes under IRDP are uniform and not attuned to the needs of the individual household.

The above narration provides the schematic description of the several research findings showing the main trends in rural economy affecting the economy and welfare of the weaker section in India.

4. SUPPORTING THE WEAKER SECTION THROUGH VARIOUS DEVELOPMENT PROGRAMMES AND GROUP ACTION.

A development programme consciously promoting the economy of the weaker section in the selected taluka of the Kolhapur district may contain the following elements. These could be experimented without going out of the way from the existing development policies on pilot basis.

- 4.1 Evolving a package of suitable developmental activities for the particular area (village) comprising a mix of both farm and off-farm activities.
- 4.2 Development and encouragement of multiple and intercropping system (crop packages).
- 4.3 Specific attention for the development of off-farm activities either complementary to agriculture or independent of it.
- 4.4 Proper identification of the beneficiaries.
- 4.5 Proper identification of projects suitable to the needs of individual household.
- 4.6 Involvement of beneficiaries both in identification of needs and initiating group action. So far there has been practically no effort to organise the 'Recipient Section' and our development efforts have been confined towards strengthening the 'Service Organisation' on the one hand and inventing 'new schemes' on the other. Organisation of group action or cooperative action will go a long way in ensuring fuller benefits from development efforts to the weaker section.

4.7 Group action or cooperative action may not alone provide answer to all the development problems of the weaker section. It will need firstly, identification of areas of intervention by those concerned with development support and secondly, initiating suitable integrated programme to support the group action.

Group action or cooperative action may not necessarily be in the form of organising new formal cooperatives. Such group activities could be integrated with the existing activities of a viable primary cooperative. In the long run such integration of activities will help the Primary Cooperative Credit Society to become truly multipurpose cooperative.

This concept essentially calls for participatory action in development efforts. Popular participation relates to involvement of the people in decision making and implementation. In nutshell it means :

- (a) Participation in decision making.
- (b) Participation in implementation.
- (c) Participation in benefits, and
- (d) Participation in evaluation.

4.8 Role of organisation in providing umbrella support :

- (a) Identification of priority areas for action.
- (b) Identification of beneficiaries through involvement of local agency/leadership.
- (c) Planning and organisation of development/assistance programme.
- (d) Monitoring and evaluation.

5. ACTION ORIENTED RESEARCH - OBJECTIVES AND METHODOLOGY

5.1 Objectives

The action oriented research objectives may try to pin-point as to (a) How the umbrella support of the Karkhana (Warna Cooperative Sugar Factory) could become an effective instrument for strengthening the economic base of the weaker section, (b) How cooperative development at primary level could serve as an effective instrument to strengthen the economic and social base of the weaker section under the umbrella

support of Karkhana (Warma Cooperative Sugar Factory) and other development and service organisations. The specific research questions that have to be enquired could be as follow :-

- (i) What sort of cooperative/group actions the weaker section need for the security of income and improvement in material welfare?
- (ii) To what extent are the required services covered by the development tasks assigned to existing organisations (governmental, i.e. DRDA, Zilla Parishad, Cooperatives, Cooperative Banks and others)?
- (iii) To what extent there exist functional coordination between different organisations/agencies? Is it operational, effective or ornamental?
- (iv) To what extent the cooperative organisations utilise the various development services offered by the DRDA and other agencies?
- (v) How the beneficiaries could be involved in the process of identification?
- (vi) How the people could be involved in development efforts?
- (vii) How women could be involved in development action and cooperative actions?
- (viii) What should be the basic elements and characteristics of an experimental action programme which would aim at achieving the double target of greater service ability of existing cooperative organisations and of other service institutions, and of weaker section's increased involvement in self-controlled cooperative/group action and organisation.

Thus the action oriented research proposed has the dual purpose of analysis and change. While the Research continues, the Action is at 'Operation'.

5.2 Methodology

- (i) The methodology could adopt a total coverage in a selected village or could adopt the sampling method of representative selection concentrating on a few representative households belonging to weaker section. In the pilot villages, to be adopted by Warna Cooperative Sugar Factory, the first proposition appears to be more suitable from the point of view of ensuring high degree of participation and relevance of findings.
- The participatory research will start at the village level and weaker section households will form unit of analysis and intervention. For macro application the option may be left to the organisation providing umbrella support depending on its resources, etc.
- (ii) Organisational surveys should concentrate on service organisations which cover the selected village so as to ensure linking up between the two levels of research. Potential and actual effect of cooperative and other service organisations can ^{only} be adequately assessed at the level where these become manifest.
- (iii) The approach of the action oriented research should provide for flexibility in design and plan of operations.
- (iv) Conclusions and recommendations should be defined in practical operational terms giving adequate concern to technical and institutional details.
- (v) To ensure replicability the action oriented research (or methodology of intervention as is technically called) should be cost effective and not depending on sophisticated research and planning techniques.
- (vi) Field level operation will be organised by the Change Agent/ Gram Vikas Adhikary to be appointed by the Karkhana and the Economic Investigator from the DRDA, Kolhapur.

6. ORGANISING GROUPS FOR ACTION - METHODOLOGY OF OPERATION : STAGES
OF ACTION FOR CHANGE AGENTS/GRAM VIKAS ADHIKARY/ECONOMIC INVESTIGATOR

- (i) Identify who are to be helped. For this purpose prepare a list of all the households falling under the category of 'weaker section' as per the definition of the DRDA with the help of household survey.
- (ii) Classify the target group as per :
 - (a) Caste groups : (SC, ST, BC and others)
 - (b) Income groups : (-do-)
 - (c) Profession groups: (-do-)
- (iii) Use the village schedule for classification suggested under(2). Also make use of the household schedule.
- (iv) For the purpose of identification of beneficiaries make use of the classification under 2(a) - caste groups and 2(c) - profession groups.
- (v) For the selection^{of} actual beneficiaries use the classification (ii)(b) - income groups. Prepare a list of households by income group (giving names) in the descending order. Select lowest income group household first and so on.
- (vi) Depending on the targets of beneficiaries to be covered decide the cut point from below. The lowest income group should receive highest priority.
- (vii) Income group classification should indicate average household income as well as per capita income. Selection criterion should give preference to household having lowest per capital income.
- (viii) Organising group meetings :
 - (a) Once the selection of beneficiaries are made on the basis of income groups then divide them into interest groups - make a separate list of selected household following different occupations.

(b) Organise separate group meetings for different interest groups to identify :

(i) Common problems.

(ii) Specific problems of a given household.

The Change Agent/Gram Vikas Adhikary should only facilitate the meeting and should act more as an observer. He should only help the group in identifying the problems.

(c) Similar method should be adopted to allow the beneficiaries to identify the solution and type of assistance that may help them in improving their economic well being. The Change Agent could at best point out the limitations or cost benefit where it becomes absolutely essential.

(d) The Change Agent should identify the problems which may be the result of "functional bottlenecks" and bring them to the notice of the concerned authority.

(e) Help the identified group in working out the economic feasibility of various action in the light of the development assistance available and relative cost benefit to the household in the long and short run.

(f) Find out the possibility of forming 'action group' for specific schemes.

(g) The service organisation and the DRDA then be approached for assistance.

7. FUNCTIONAL ARRANGEMENTS

=====

A. FORMULATION OF STEERING COMMITTEE

- (a) This committee be constituted at Karkhana level.
- (b) Membership to the committee (to be nominated) representing Chairman of Karkhana, Village Cooperative, Panchayat, Block, Chairman, Zilla Parishad, Project Officer, DRDA, Chairman, KDCC or his nominee, representative of the Financing Bank, Gram Vikas Adhikary (Change Agent), Managing Director of Warna Coop. Sugar Factory, two weaker section representatives, and Consultant to the Project.

Functions

- (a) Committee to formulate policy, decide and sanction action projects, monitor and evaluate the progress of projects.
- (b) It should meet once a month on a fixed date (to be decided).

B. FORMATION OF FUNCTIONAL COMMITTEE AT BLOCK LEVEL

Chairman of the Factory, Gram Vikas Adhikary, (Convener) BDO, Agricultural Officer of the Block and Bannor official, Assistant Registrar, ^{Cooperative} Bank representative, Gramsevak, Talathi, two representatives of weaker section.

Functions

- (a) Coordination of activities.
- (b) Formulation of projects with the help of Gram Vikas Adhikary/ Change Agent at Karkhana.
- (c) Review and supervise the progress of projects and reporting to Steering Committee.
- (d) To meet twice a month once action projects gets started.

C. FUNCTIONAL ARRANGEMENT AT THE VILLAGE LEVEL

Change Agent : to supervise and guide the work of Economic Investigators and other functionaries.

Primary tasks

- (i) To conduct village and household survey - Economic Investigator.
- (ii) To prepare a report on this survey - Gram Vikas Adhikary.
- (iii) To fix the target date to complete the village and household survey (within two months).
- (iv) While the village survey is going on, the group meetings should be organised and interest groups should be formed simultaneously.
- (v) Identification of schemes suited to the interest groups in the shape of a package to cross the poverty line. This has to be modified in the light of the survey report.
- (vi) Schemes are to be finalised and put across to the interest groups within the next two months of the survey report.
- (vii) Finalisation of the interest groups and schemes to be done by the functional group at the Block Level after getting the approval of the steering committee.

D. ACTION PLAN (ECONOMIC INVESTIGATOR AND THE GRAM VIKAS ADHIKARY)

- (i) To identify the available schemes and institutions providing the assistance.
- (ii) To prepare a package of schemes for the interest groups.
- (iii) To prepare agricultural production plan for each family with the help of Benner staff.
- (iv) To prepare a plan for each family to promote small savings.
- (v) To prepare a health and sanitation plan with the help of the community health worker.
- (vi) To prepare a plan for adult education. In the preparation of the plan for adult literacy thought should be given to link the eligibility for availing the benefits of a given scheme with that of attending literacy class.

- (vii) Formation of social groups like youth clubs, keertan mandali, mahila mandal, etc.
- (viii) Identification of plan of action for creation of community assets like school building, percolation tank, drinking water, etc.
- (ix) Identification and preparation of infrastructural development plan by the Gram Vikas Adhikary.

E. FUNDING OF THE PROGRAMME (FINANCIAL SUPPORT).

- (i) The Warana Sahakari Sakhar Karkhana will provide the umbrella support to the whole scheme of development. A revolving fund will be created for funding schemes in case of needs and delays.
- (ii) Financial support needed for working capital for both agricultural and non-agricultural activities will be provided by the Kolhapur District Central Cooperative Bank Limited and the Dena Bank as the case may be.
- (iii) In case of a specific scheme where neither of the above banks are able to lend financial support, the support of agencies like Khadi and Village Industries Board may be obtained. In case that is also not available, Shree Warana Sahakari Sakhar Karkhana will lend necessary support.
- (iv) The financial assistance under NSS and other schemes of DRDA should be fully utilised for infrastructure development of both productive and unproductive schemes.
- (v) Once the schemes are formulated and approved by the Steering Committee the financial aspect has to be taken care of by the BDO and the Gram Vikas Adhikary will act as liaison to bridge any gap through personal efforts. In addition to this specific priority schemes suggested by the Gram Vikas Adhikary will receive top attention of the BDO who will ensure that all necessary finance including subsidy loans, etc. are provided without any delay.

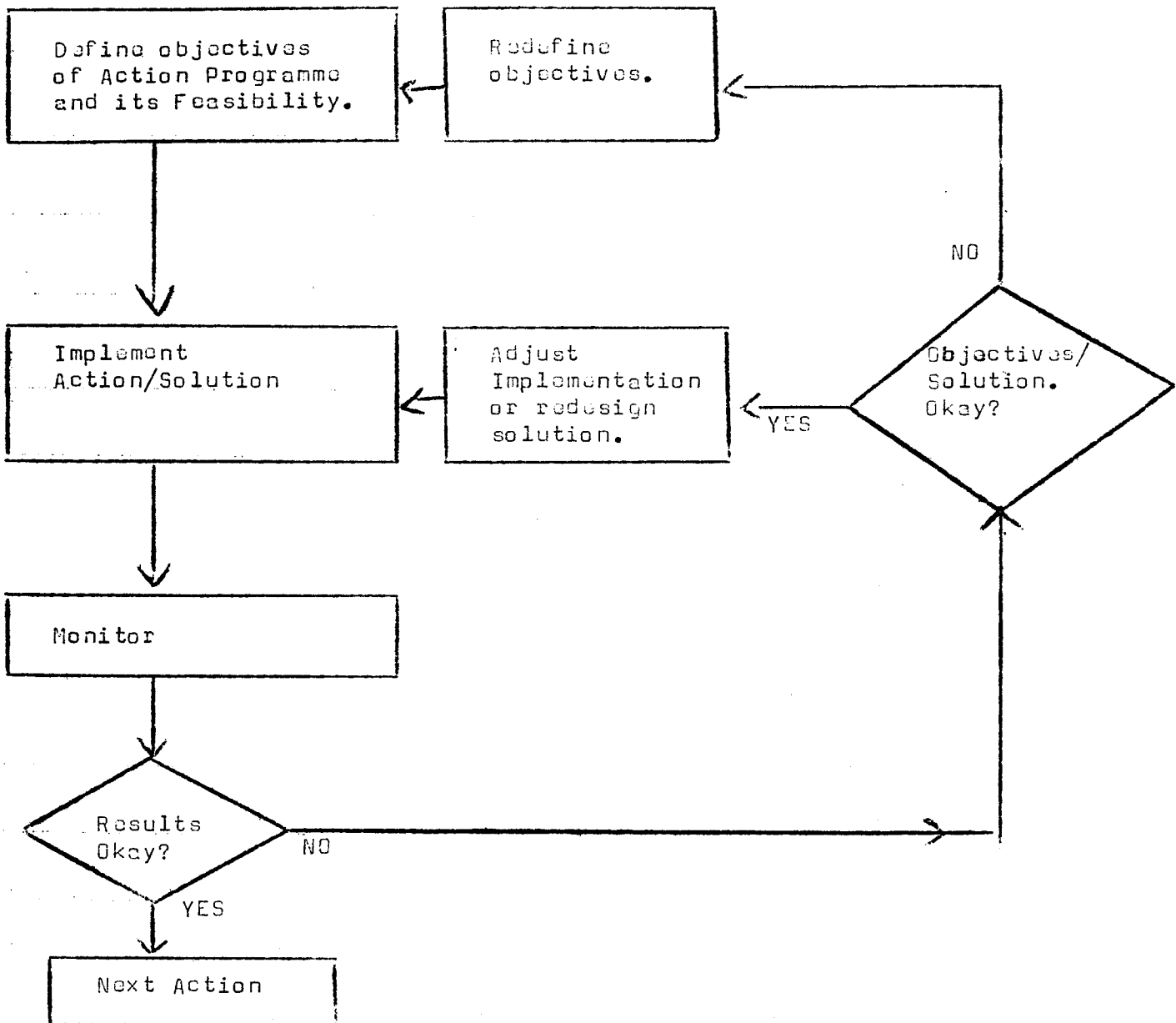
F. INITIATING ACTION PROGRAMME IN TWO VILLAGES

- (i) As per the decision of preliminary meeting the action programme will start on the auspicious day of Guru Pushyamrit Yog on 24th March 1983 in two villages, i.e. Baccho Sarvedo in Panhala taluka and Nagaon in Hattikangle taluka served by the Warana Nagar Cooperative Sugar Factory. It is suggested that the work under action programme may first be undertaken on social front involving the life of weaker section. This is expected to create favourable climate in the adopted village.
- (ii) The Consultant, Dr. G. Ojha, in consultation with the Project Officer, DRDA, have worked out model household and village schedules for survey purpose which are enclosed. It also contains a proforma for village and household profiles for action. These schedules will be used for action research.
- (iii) Dr. Ojha will ensure the training of the people who will be involved in this operation by 23.3.1983.

G. MONITORING AND EVALUATION PROCEDURE

The monitoring and evaluation should be built-in in the system. The monitoring and evaluation system should provide sufficient information for identification of problem areas in action programme. For effective monitoring, one needs upto date and accurate information. The task of monitoring and evaluation should be that of Gram Vikas Adhikary of the Warana Nagar Cooperative Sugar Factory. A suggestive monitoring and evaluation flow-chart is given on the next page for functional conveniences.

MONITORING AND EVALUATION FLOW CHART FOR IMPLEMENTING
ACTION PROGRAMME



Note : (1) Decision points are written in 'diamonds' and require a YES/NO decision.

(2) Actions are written in 'rectangles.'

8. VILLAGE SURVEY SCHEDULE (A MODEL VILLAGE SURVEY SCHEDULE AND VILLAGE ACTION PROFILE FOR ACTION ORIENTED RESEARCH TO PROMOTE COOPERATIVE EFFORTS FOR THE DEVELOPMENT OF WEAKER SECTION - COURTESY : ICA ROEC, NEW DELHI UNDER PROJECT COOPERATIVE AND THE POOR.
-

1. Introductory

1.1 Name of the village : _____

1.2 Name of the district : _____

Taluka : _____

Panchayat : _____

1.3 Name of the post office : _____ Distance _____

1.4 Distance from district : _____ km. Taluka _____

1.5 Name of the major cooperative processing units _____

Distance : _____

1.6 Name of the Service Organisation :

(a) Cooperative Society (VKSS).

i.

ii.

(b) Name of the nationalised bank : _____

(c) Nearest Branch of the Bank : _____

Distance : _____ km.

(d) Other types of cooperative institutions within the village.

(i) Lift irrigation society : Name _____

Membership _____

- (ii) Lift irrigation society : Name _____
Membership : _____
- (iii) Dairy society : Name _____
Membership : _____
- (iv) -do- : Name _____
Membership : _____
- (v) Others : Name _____
Membership : _____

1.7 A note on road communication connecting the village (give condition of road)

2. Demographic information

2.1 Total no. of households as per census records : Number _____

2.2 Classification of households as per census records or society records.

Size group of land	Agricul- tural house- hold. No.	Agricul- tural labour house- hold. No.	Rural arti- sans. No.	Others(including wage earners and profession) No.
--------------------	---	---	--------------------------------	--

Without land
below 1 acre

1.01 to 2.5 acres.

2.5 to 5.0 acres.

5.01 acres and above

TOTAL ALL GROUPS

=====

2.3 Caste structure and incidence of poverty.

Caste groups	No. of house- holds.	Number below poverty line as per DRDA norms.	Remarks
Scheduled caste			
Scheduled tribes			
Backward class			
Others			
TOTAL			

2.4 Migratory trends of working population :

(a) Seasonal migration :

(i) To

(ii) For

(b) Permanent migration (if visible) :

(i) To

(ii) For

3. Topography and geographical situation

3.1 Topography of land (broad view)

3.2 Main soil types :

(a) (b)

(c) (d)

3.3 Under ground water level (short note).

3.4 Access to water

=====

Access to water	No.	Area irrigated	No. of households served.	Of which No. belonging to weaker section.	Remarks
-----------------	-----	----------------	---------------------------	---	---------

a) Drinking water

i) Wells

ii) Hand pump

iii) By panchayat pipe water supply.

b) Irrigation wells.

c) Lift irrigation schemes

d) Others

=====

3.5 Is there potentiality of development of water resources :
give brief account.

3.6 Is electricity available within or nearby
for such development. YES / NO

If yes, distance : _____ km.

4. Key social establishments.

4.1 Panchayat samity :

- i) Work accomplished :
- ii) Work at hand :
- iii) Work proposed to
be undertaken :
- iv) Any specific problem faced.

4.2 (a) Village school :

- i) Upto which standard :
- ii) No. of students :
- iii) Condition of building:
- iv) Drinking water arrangement :
- v) Any specific problem with regard to management.

- (b) i) Is there any adult literacy class held regularly? YES / NO
- ii) If yes, what is the response:
Good / Satisfactory / Poor.
- iii) Is there any separate literacy class for women? YES / NO
- iv) If 'NO', could it be organised?

4.3 A short note on the existence, functioning, frequency of meetings, etc. of the following social organisations:

(a) Youth club

(b) Kirtan mandali.

(c) Akhara

(d) Mahila mandali/Bhagani Mandali.

4.4 What specific action needed, if they are not functioning properly? In case there are no such institution existing, assess the possibilities of organising such organisations.

5. Key economic establishments (village based) other than referred earlier.

5.1 Main types of village or cottage industry.

5.2 Nearest market centre :

5.3 No. of traders/shop keepers.

5.4 Main sources of supply of consumer articles.

5.5 Any processing unit within the village.

6. Key development and community service establishments.

6.1 Name of the Government Development Agency.

(a) Block (name) _____ Distance _____ km

(b) Types of officers attached :

i) _____ Frequency of visit

ii) _____ -d0-

6.2 Primary Health Centre/Service.

(a) Name of the Centre :

(b) Location : _____ Distance _____ km.

(c) If the doctor visits the village? YES / NO

(d) Is yes, frequency of such visit?

(e) Is there any specific problem faced by the people with regard to health services? (Specify, if any).

(f) ~~Is~~ family planning propoganda/knowledge was given in the village? YES / NO

(g) If yes, with what results.

(h) Main hurdles, if any, in this regard.

6.3 Primary veterinary service/centre.

(a) Name and location of the centre :

(b) Distance from the village :

(c) What is the frequency of visit of doctor to the village?

(d) Is the facilities for artificial insemination available at the Centre?

YES / NO

(e) ~~Is~~ there is any specific problem faced by the people with regard to veterinary service.

6.4 What development or specific activities have been carried out under National Social Service Scheme (NSS)?

(a) Specific schemes/activities.

(b) Result of such programme.

(c) Identify areas where such activities could be integrated with village development.

6.5 What specific activities have been taken up under National Rural Employment Programme (NREP) and TRYSEM?

(a) Give specific project undertaken:

(b) Outcome of the project:

(c) Identify further areas of action.

7. Agriculture

7.1 Crop-wise cultivated area (1982-83).

=====

Type of crops	Area covered	Area irrigated	Productively level good/normal/poor
---------------	--------------	----------------	-------------------------------------

7.2 Area under permanent fallow:

7.3 Area capable of development :

7.4 Area under pasture :

7.5 Area available for distribution to landless.

7.6 Is there possibilities of introducing cash crops? YES / NO
If yes, identify crops.

7.7 Is there scope for introducing Social Forestry? YES / NO

If yes, describe the possibilities.

7.8 Frequency/cycle of crop failure and causes.

7.9 Main types of fertilisers and insecticides and pesticides demanded by the farmers.

(a) Types of fertilisers :

(b) Insecticides :

(c) Pesticides :

7.10 Are these available in time and in adequate quantity? YES/ NO

7.11 If not, what are the main reasons?

8. Live Stock

8.1 Is there scope for development of dairy farming?
Identify following:

- (a) Quality of existing milch cattle.
- (b) Marketing channels like existence of chilling plant, milk, etc (examine in the light of potentiality for future expansion of the programme).
- (c) Fodder/Feed supply situation.
- (d) People's outlook to dairy.
- (e) Veterinary services.

8.2 Is there possibility of development of poultry farming?
Identify following.

- (a) People's outlook.
- (b) Marketing channels.
- (c) Veterinary services and training facilities.
- (d) Availability of poultry feed.

VILLAGE PROFILE OF ACTION

8.1 Identify objectively the main reasons i.e. infrastructural/Social/Service institutions/Economic/Administrative (if any) which hinders the development benefits to reach the weaker section.

- (a) Infrastructural
- (b) Social
- (c) Service institutions
- (d) Economic (both agricultural & industrial)
- (e) Administrative.

8.2 Identify areas of potential for development.

- (a) Infrastructural
- (b) Social
- (c) Organisation of coop group action for economic.
- (d) Agricultural extension and services.

8.3 Identify specific actions in order of priority in respect of :

(a) Infrastructural development.

(b) Social development.

(c) Agricultural development.

(d) Improvement in the working and services of service organisations.

(Note : Identification of action be based on performance gaps or absence of facilities as may be reflected under various sub-heads in village schedule and household schedule).

8.4 General remarks.

HOUSEHOLD SURVEY SCHEDULE - A MODEL HOUSEHOLD SURVEY SCHEDULE FOR ACTION ORIENTED RESEARCH TO PROMOTE COOPERATIVE EFFORTS FOR THE DEVELOPMENT OF WEAKER SECTION - COURTESY : ICA ROEC, NEW DELHI : UNDER THE PROJECT COOPERATIVE AND THE POOR).

1. Introductory

Name of the village _____ Taluka _____

1.1 Name of the head of the household:

1.2 Father's name :

1.3 Religion :

1.4 Caste Sub-caste

1.5 If belongs to (a) Backward class
(b) Scheduled caste
(c) Scheduled tribes

1.6 Size of family : No. _____

1.7 Occupation of Head :

(a) Primary :

(b) Secondary :

1.8 Total owned land : Area _____ Irrigated _____

1.9 Total cultivated : Area _____ Irrigated _____

1.10 *Household income (annual) to be collected after adding income from all sources.

*This question is not to be asked.

IMPORTANT FOR ACTION : (2.1 to 2.2)

Investigator to note priority action needed on their part if the answers are positive under b, d, & g.

ACTION PROPOSED

(Note : Action proposed under these will mostly relate to coordinator the services of other organisation at village level).

2. Socio Economic Status of the family.

2.1 Family information : Start from head of the family

S. No.	Name	Relation with head.	Sex M/F	Age	Education	Occupation			Does anyone drinks alcohol in the family.	For child education		
						Pri- mary	Secon- dary	Others.		Going to School	Not going	Reasons

2.2 Family health

- (a) Is anybody in the family disabled/handicapped. YES / NO
- (b) If yes, nature of disability and help needed.
- (c) Is the children in the family have been covered under child health care i.e. triple vaccination, etc. YES/ NO
- (d) If no, would you like to protect them under such scheme YES / NO
- (e) Do you think family planning is a way to family happiness? YES / NO
- (f) Have you gone through family planning measures? YES / NO
- (g) If no, would you like to go in for this Govt. provides cash incentives. YES / NO

2.3 Family income from remittances:

=====

Sr. No.	Name of the family member staying out for work.	Place of work	Nature of work	Average annual remittance.	Frequency of visit annual.
1.					
2.					
3.					
4.					

TOTAL

3. Family Assets

3.1 Home stead land (including cattle shed, if any).

- (a) Do you own your house including the land on which it is built? YES / NO
- (b) If not, who has given you the land.
- (c) Area on which the house is built up (including vacant area) : Area _____
- (d) Approximate value of land and house : Rs. _____
- (e) Amount spent during last two years on construction and repair. : Rs. _____
- (f) What help do you need with regard to your any housing problem?
- (g) Could you think of developing non-traditional plantation/ high land crops around the vacant land of your house? YES / NO
- (h) If yes, what type of development you could think of and assistance needed.
- (i) From where do you get drinking water?
- (j) Do you need any assistance in this respect? YES / NO
- (k) If yes, nature of assistance needed.

IMPORTANT FOR ACTION : (3 to 3.1(k)).

Investigator should note positive response under
'f', 'h', and 'k' and note down the action needed.

ACTION PROPOSED

3.2 Family Assets - Durable Goods (excluding agricultural implements)

=====

Sr. No.	Name of the durable goods.	No.	Value approx- tely.	Value if pur- chased during last 2 years	Source of finance	Subsidy if any, ks.	Remarks
---------	----------------------------	-----	------------------------	--	----------------------	------------------------	---------

=====

1. Sewing machine
2. Gobar gas
3. Cycle
4. Radio/transistor
5. Clock
6. Kerosene stove
7. Lantern
8. Utensils
9. Furnitures
10. Hand water pump
in the house.
11. Others

- =====
- 3.2 (i) (a) If you have a sewing machine do you make proper use of that? YES / NO
- (b) Is he/she making the use is properly trained? YES / NO
- (c) If not do you like to avail any training facilities. YES / NO
- (d) Will you be interested in business aspect of this help? YES / NO

IMPORTANT FOR ACTION : (3.2 to (i) a to d).

Investigator to note priority action needed if the responses under 3.2 (i) 'c' and 'd' are positive.

ACTION PROPOSED

3.3 Family Assets - Land by Soil Type.

3.3(a) Owned land

Sr. No.	Soil type local with No. of plots	Area	Of which irrigated	Soil testing		Water charges. Rs.	Land reve-nue.	If bunding/levelling	
				Done	Not done			Needed	Not needed
1	2	3	4	5	6	7	8	9	10
=====									

3.3(b) Land taken on lease :

3.3(c) Land taken on mortgage :

3.3(d) Total cultivated area (3.3(a) + 3.3(b) + 3.3(c)).

Note : Obtain brief note on terms and conditions in respect of 3.3(b) and 3.3(c).

IMPORTANT FOR ACTION : (3.3).

Investigators to note responses under columns 6 and 9 and note down action plan.

ACTION PROPOSED

4. Agricultural Production and Costs.

4.1 Agricultural Production

=====

Sr. No.	Name of the crop.	Area	Irrigated	Production		Value of by-product Rs.	If the crop was		Main problem faced
				Quin- tals.	Value		Normal	Bad	
1	2	3	4	5	6	7	8	9	10

Kharif - Hyv.

Traditional

Rabi-Hyv.

Traditional

Others - Hyv traditional

=====

4.2 (a) If crop planning was done and adopted as per NCL statement. YES / NO

(b) If not, what was the reason for deviation?

(c) If the supply of credit from the Vikas Society was :

Adeq- uate	Not adequate	In time	Not in time
1	2	3	4

Cash component
Kind component

TOTAL

=====

IMPORTANT FOR ACTION : (4.1 to 4.2).

Note the response under 4.1 column 9 and 10 and under 4.2 (b) and (c) column 2 and 4 and note the proposed action needed.

ACTION PROPOSED

4.3 Agricultural production costs.

Sr. No.	Name of the crop.	Seeds		Fertilisers.		Pesticides		Compost Value	Hired Labour Value	Water charge Value
		Qty.	Value	Qty.	Value	Qty.	Value			
1	2	3	4	5	6	7	8	9	10	11

Hyv. crops

Traditional crops

4.3 (a) Did you face any problem with regard to supply/availability of:

<u>Seeds</u>	<u>Fertiliser</u>	<u>Pesticides</u>	<u>Compost</u>	<u>Labour</u>	<u>Water</u>
YES/NO	YES/NO	YES/NO	YES/NO	YES/NO	YES/NO

(b) Did you needed any extension service YES / NO

(c) If yes, did you get that? YES / NO

(d) If not, what exactly happened?

(e) Did you adopt crop rotation? YES / NO

(f) If no, do you like to have technical help to guide you in crop planning & rotation. YES / NO

IMPORTANT FOR ACTION :

(4.3).

Note the response under 4.3 (a) to (f) and note the proposed action needed.

ACTIONS PROPOSED

5. Marketing of agricultural produce and other disposals :

Sr. No.	Name of the crop.	Marketed through		Repayment of loan	Payment of labour	Retained for self consumption
		Coop.	Trader	Qty. Value	Qty. Value	Qty. Value
		Qty. Value	Qty. Value			

5.1 Marketing conditions and problems :

- (a) Did you sale major part of your cereal production. YES / NO just after the harvest.?
- (b) If yes, what was the reasons?
- i)
 - ii)
- (c) Whom do you sale the produce?
- To coop (specify crops)
 - To traders.
- (d) What problems did you face in the marketing of crops like godown, transport, etc.?
- (e) Do you think some efforts could be made to solve the problems? If yes (specify).
- (f) Did you feel you got remunerative price? YES / NO
- (g) If no, could you say 'why' and suggest some thing to improve the situation.

6.1 Milch cattle (animals)

Sr. No.	Type	No.	Value/price	Average daily milk liters	Average price of milk	Lactation period in months	Cost on feed etc. p.m.	Income from sale of milk (total)		How obtained the animals		
								Coop. Q. Value	Private Q. Value	Coop bank loan	Bank Self loan	Subsidy, if any

1. Cow
2. She buffaloes.
3. Others (specify)

6.2 Drought animals

Sr. No.	Type	No.	Value	Annual income from use/hire	Average annual cost.	How obtained			
						Self	Coop.	Bank	Subsidy

1. Bullock
2. Buffaloes
3. Others (specify)

6.3 Other animals and birds

1. Sheeps
2. Goats
3. Pigs
4. Hens
5. Others

6.4 If any animal died during last two years : YES / NO

If yes, type of animal and number lost with value.

42

IMPORTANT FOR ACTION : (5 to 5.1).
 Note the response under 5.1 (a) to (g) and note the proposed action needed.

ACTION PROPOSED

6.4 Issues relating to live stock business :

(a) What problems do you face in relation to maintenance of your live stock? i.e.

- i) Supply of feed and fodder.
- ii) Water
- iii) Marketing of milk
- iv) Marketing of eggs.
- v) Marketing of meat.
- vi) Proper use of draught animals.

6.4 (b) Veterinary services:

- i) Is the veterinary services available? YES / NO
- ii) If yes, do you make use of it. YES / NO
- iii) If no, could you explain the reason?
- iv) Do you avail of the facilities of artificial insemination? YES / NO
- v) If no, could you explain the reasons?
- vi) Have you got any suggestion to improve veterinary services?

6.4 (c) i) Are you aware about the various services offered by the Govt. and subsidy by DRDA? YES / NO

ii) Have you availed the assistance? YES / NO

iii) If no, would you like to avail the assistance (specify) YES / NO

iv) If no, why?

IMPORTANT FOR ACTION : (6.4).

Note down the specific problems and assistance needed under 6.4 (a), 6.4 (b), 6.4 (c) and note down the action needed.

ACTION PROPOSED

7. Employment and Earnings

7.1 Earnings from wage employment

=====

Sr. No.	Name of the earner	Sex	Types of employment			Total employment				
			Agril. Labourer	Factory worker.	Other works					
			No. of days	Earnings Rs.	No. of days	Earnings Rs.	No. of days	Earnings Rs.	No. of days	Earnings Rs.
=====										

7.2 Employment conditions :

(a) How many members are skilled worker? : No. _____
(specify the type of skills)

(b) How many adult members do not work? : No. _____

Reasons _____

(c) How many members need wage employment? : No. _____
(specify type of employment preferred)

(d) If any of the family member is willing to take up self employment scheme such as starting panshop, cycle repair, etc. YES / NO

(e) If yes, specify the type of assistance needed.

(f) If no, specify the reasons.

IMPORTANT FOR ACTION

: 7 to 7.2 (a) to (f) :

Note down the level of unemployment and under employment in case of each member.

Note priority action needed in respect to response to Question 7.2 (a) to (e).

ACTION PROPOSED

8. Income and employment in trade and profession
- 8.1 Description of the activities.
- 8.2 Place of activity.
- 8.3 Duration : Full time/part time/casual.
- 8.4 Employment days :
- 8.5 Total net annual earning :
- 8.6 Type of raw material used :
- 8.7 Problems relating to procurement of raw material, if any :
- 8.8 Where marketing :
- 8.9 Problems relating to marketing :
- 8.10 Do you need any assistance to run the business? (specify type of assistance needed).
- 8.11 If you are not already in any trade or profession would like to take up any : YES / NO
- 8.12 If yes, specify the trade or profession preferred.
- 8.13 Specify the type of help needed.

IMPORTANT FOR ACTION : (8 to 8.13) :

Note down the problems under 8.7, 8.9, 8.10, 8.12 and 8.13 and note down the action needed in order of priority.

ACTION PROPOSED

9. Borrowings and Debts

9.1 Working capital loan :

```
=====
```

Sr. No.	Source of loan	Amt.	Purpose	Actually used for	Amt. paid	Amt. out-standing.	If over-due	Any problem in respect of loan.
1	2	3	4	5	6	7	8	9

```
-----
```

1. Coop. Vikas Society.

2. Bank (if any)

3. Money lenders

4. Others(specify)

9.2 Investment loan (productive)

1. Coop.(VKSS)

2. Sugar factory

3. Bank

4. Others(specify)

9.3 Did you receive crop loan as per your NCL? YES / NO

9.4 Did you get any subsidy for any investment capital loan? YES /NO

9.4 If yes, please identify the agency and give the amount of subsidy availed.

9.5 Did you face any particular problem with regard to getting investment loan from :

(a) Cooperative

(b) Bank

(c) Others

9.6 What additional investment capital loan do you need and for what purpose? (if any).

9.7 Do you need any additional loan? (including consumption). (specify).

YES / NO

IMPORTANT FOR ACTION :

(9 to 9.7) :

Note down the response under 9.1 and 9.2, column 8 and responses under 9.3, 9.5, 9.6 and 9.7 and note down in priority order action plan.

PROPOSED ACTION

10. Acquisition and disposal of assets during last two years.

Sr. No.	Assets acquired	No./ Area	Value	How financed			Assets sold	No./ Area	Value	To whom	Why sold
				Coop	Bank	Loan					
				self	from	money					
										Lender	

1. Land
2. Live stock
3. Bullock cart
4. Durable consumer goods.
5. Jewellery
6. Others
7. House

=====

11. Savings
 - 11.1 Do you save any money in post office/Bank/Cooperative? : YES /NO
 - 11.2 If no, do you think you could save something out of your hard earnings for future. : YES/ NO
 - 11.3 If yes, how do you think of doing it :
 - (a) Making small deposit with cooperative.
 - (b) Making small deposit with post office.
 - (c) With self.

12. Household efforts and analysis of its problem

12.1 Have you approached anybody with regard to solving your problem? YES / NO

(a) If yes, whom? :

(b) With what result :

(c) If not, give reasons.

12.2 What type of assistance do you need for specific problems in order of priority.

=====

Problems in order of priority	Type of assistance needed.	From where assistance is visualised.
-------------------------------	----------------------------	--------------------------------------

12.3 How you could help yourself if certain assistance is provided from outside?

IMPORTANT FOR ACTION : (12 to 12.3) :
Note down the response under 12.1(b) and (c),
12.2 and 12.3 and note priority of action.

ACTION PROPOSED

13. Household expenditure on food, clothing, etc.

Sr. No.	Item of consumption	Home produced		Purchased		Total		Remarks regarding availability of essential items.
		Qty.	Value	Qty.	Value	Qty.	Value	

1	2	3	4	5	6	7	8	9	0
---	---	---	---	---	---	---	---	---	---

13.1 Food items (for month)

1. Rice
2. Atta
3. Jawar & bajra
4. Other cereals
5. Pulses
6. Cooking oil/ghee
7. Spices (value only)
8. Vegetables (value)
9. Meat/fish/chicken (value)
10. Milk
11. Eggs (value)
12. Kerosene/fuel (value)
13. Washing soda (value)
14. Intoxicant (value)
15. Pan/Bidi/Cigarette/Tobacco (value)

13.2 Educational/Social

Annual expenditure

How financed

Self Loan

Any comments on cost relating to education/medical facility

1. Education fee, books.
2. Social obligations
3. Religious obligation
4. Journey
5. Marriage in family

13.3 Clothing and medical

1. Clothing (value)
2. Durable goods
3. Medical - self & family.
4. Medical live stock

IMPORTANT FOR ACTION :

(13.1 to 13.3) :

Note down the response under 13.1 column 9 and 13.2 and 13.3, column 6 and note priority of action plan.

PROPOSED ACTION

14. Family Balance Sheet (annual) Year _____.

Sr. No.	Source of income	Income (Rs.)	Sr. No.	Source of expenditure	Expenditure (Rs.)
1.	Agricultural production (net)		1.	12.1 Total food items Sr.No.1 to 16.	
2.	Live stock (net)		2.	12.2 Total expenditure on education and social events Sr.No.1 to 5.	
3.	Agricultural wages and other employment.		3.	12.3 Total expenditure on clothing, durables and medical (Sr.No.1 to 4.	
4.	Trade and profession.		4.	Others (specify)	
5.	Remittances				
6.	Others (specify)				
Total income			Total expenditure		

14.1 Difference of Income and Expenditure :

(a) Surplus : Rs. _____

(b) Deficit : Rs. _____

14.2 If the household is deficit, how the needs are met?

IMPORTANT FOR ACTION : Work out the total income and classify the household in the income group with priority (give tick mark)

<u>Income groups</u>		<u>Weightage</u>
(a) Upto Rs.1200/- p.a.	<input type="checkbox"/>	Top most priority
(b) Rs.1201 to Rs.1600/- p.a.	<input type="checkbox"/>	Top priority
(c) Rs.1801 to Rs.2400/- p.a.	<input type="checkbox"/>	Priority-I.
(d) Rs.2400 to Rs.3500/- p.a.	<input type="checkbox"/>	Priority-II.
(e) Above Rs.3500/- p.a.	<input type="checkbox"/>	Low priority

10. FAMILY PROFILE FOR ACTION

(FAMILY PROFILE FOR ACTION - A MODEL PROFILE SCHEDULED FOR ACTION ORIENTED RESEARCH - COURTESY : ICA ROEC, NEW DELHI).

Note: Each family profile card is to be prepared based on the household survey findings of each family on the basis of which the 'Interest Group' profile shall be worked out.

1. Name of the head : Village : _____
2. Father's name :
3. Household number as per survey :
4. Caste :
5. Size of family : No : _____
 - (a) No. of workers :
 - (b) Non-workers :
 - (c) Children :
6. Income annual :
7. Name of the coop of which he is a member :

N a m e	Value of share
i)	
ii)	
iii)	
8. Total land area under operation :

Area : _____	Irrigated : _____
--------------	-------------------
9. Main crops :
10. House Area : _____ With cattle shed / Without cattle shed
 - (a) Is it owned : YES/NO
 - (b) Approximate area not under use: _____

11. Employment

11.1 If any member of the family has technical skills? YES/NO

(a) Nature of technical skills.

(b) Is he employed? YES/NO

(c) If no, type of assistance needed.

11.2 (a) No. of adults unemployed (without skills) : No. _____

(b) What type of assistance needed :

- i) Technical training
- ii) Employment unskilled work.
- iii) Group activity - business.
- iv) Others (specify).

12.* What are the interest areas of joint economic efforts :

- i) Common irrigation.
- ii) Dairy - on group loan.
- iii) Poultry on group loan.
- iv) Small enterprise such as hand pounding of mashala and sale.
- v) Tailoring or garment making.
- vi) Joint marketing of produce including vegetables.
- vii) Others (specify)

13. What are the interest areas of individual economic efforts :

- i) Development of horticulture on homestead land.
- ii) Bee keeping.
- iii) Dairy on group loan.
- iv) Poultry on group loan.

*These be recorded from household survey.

v) Individual enterprise, i.e.

(a) Pan shop.

(b) Cycle repair shop.

(c) Bullock cart driving.

(d) Bee keeping

(e) Goat/sheep rearing

vi) Any other scheme (specify)

14. Family Planning : Needs / Does not need

15. Loans

15.1 Current (year _____) working capital :

(a) Cooperative Amount Interest to be paid.

(b) Repayment : Rs.

(c) Overdue, if any.

15.2 Development loan Rs. _____ Period _____ Interest _____

(a) Cooperative : Rs.

(b) C. Bank : Rs.

(c) Sugar Factory/others : Rs.

16. Savings.

i) With cooperative.

ii) With bank.

iii) With sugar factory.

iv) Others.

17. Individual household action plan.

17.1 Identify as per the response received in the household survey with regard to social and economic needs of the family list them have in priority order separately for social action/economic action/administrative action.

(a) Identified social needs by priority.

(b) Identified economic needs by priority.

(c) Identified administrative needs by priority.

18. Action for identified needs.

18.1 Work out possible action programme as per existing or potential feasibility with regard to priority needs related to social/economic/and administrative needs. (Under each action plan Name of the scheme to be given and net income generation be indicated).

(a) Action proposal for social needs (see relevant section).

i) Action by family (individual).

ii) Family to join group effort.

(b) Action proposal for economic needs.

i) Action by family in the field of (see section 12 & 13).

ii) Family to join economic group action in the field of :

(c) Action proposal for administrative needs :

i) Actions to start at family level such as submission of complaint/application/rectification of gaps, if any.

ii) Appropriate action by change agent to be taken at administrative level/service organisation level.

(d) Final net income generation of the family proposed.

i) Net income generation before action started : Rs. _____

ii) Additional net income proposed through economic schemes vide b i & ii. : Rs. _____

iii) Total net income : Rs. _____

*